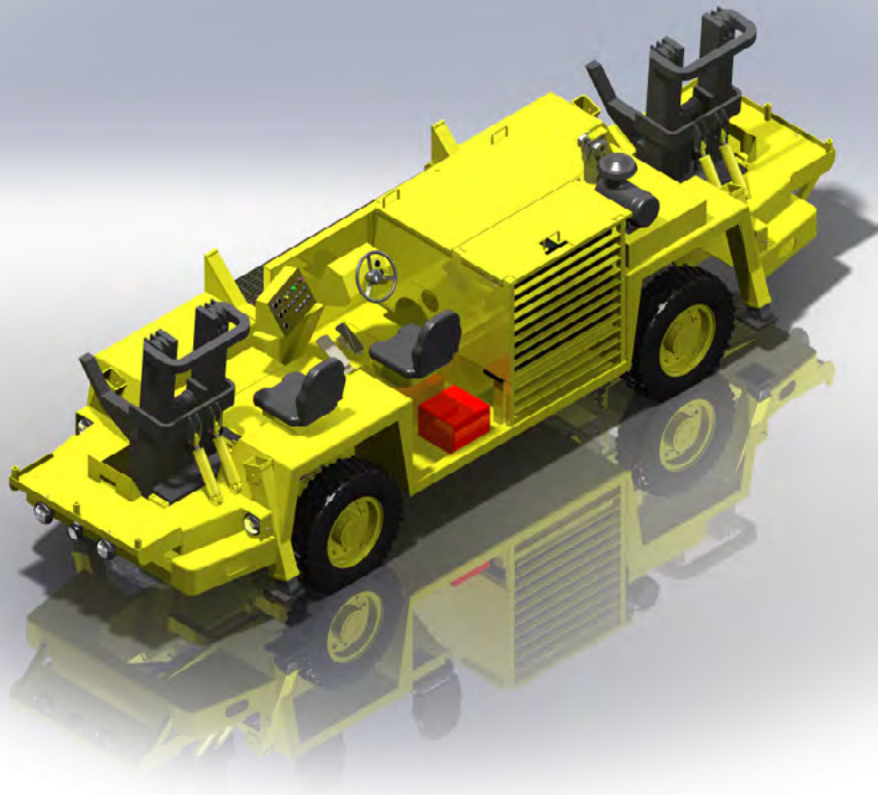




**TRIDENT**  
*PIPE HANDLER*

**TRIDENT**  
MINING SYSTEMS

## TECHNICAL SPECIFICATIONS



**TRIDENT MINING SYSTEMS**

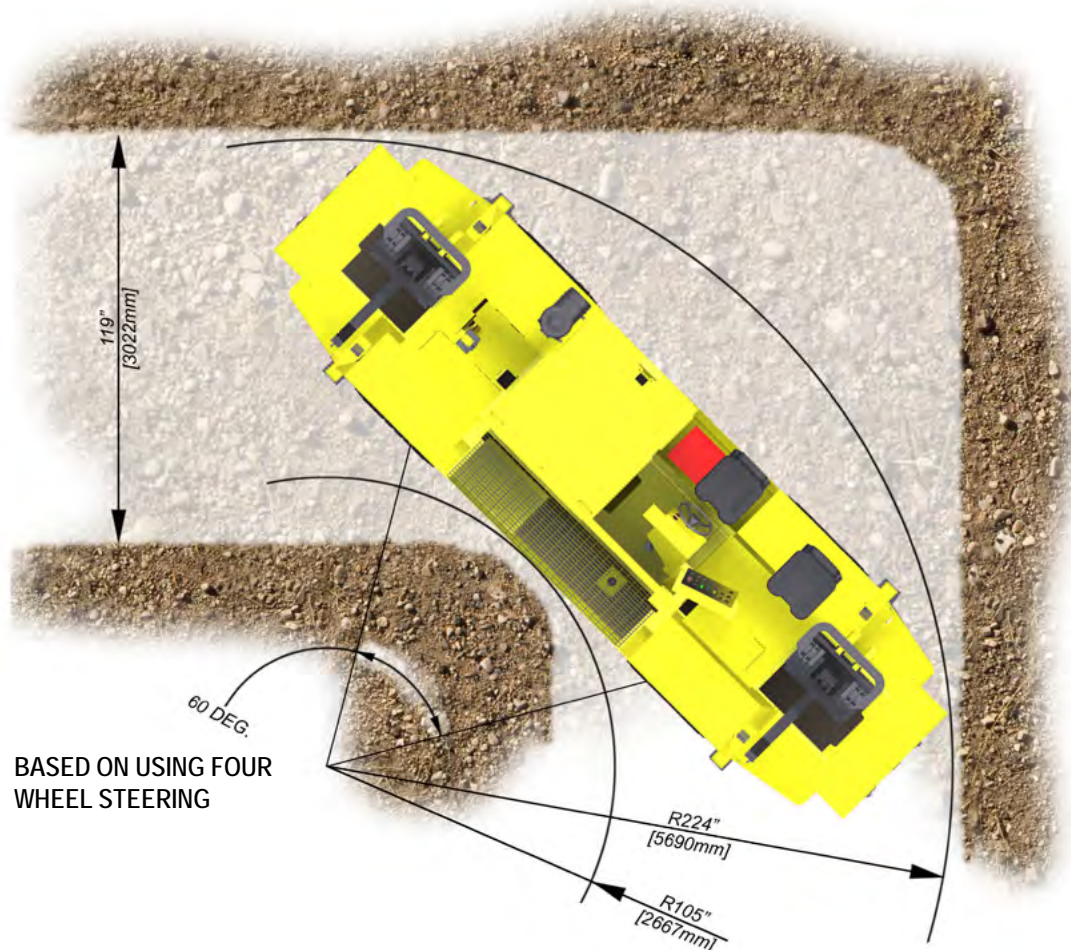
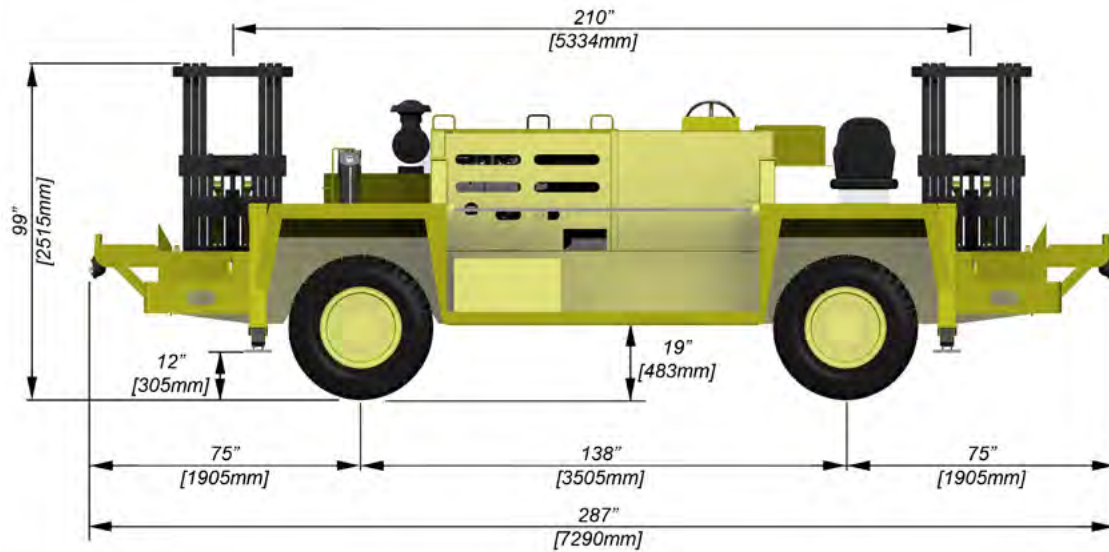
6075 King Street  
Porcupine, ON  
Canada, P0N 1C0

Telephone (705) 235-4888 Fax (705) 235-4911

[www.tridentgroup.ca](http://www.tridentgroup.ca)

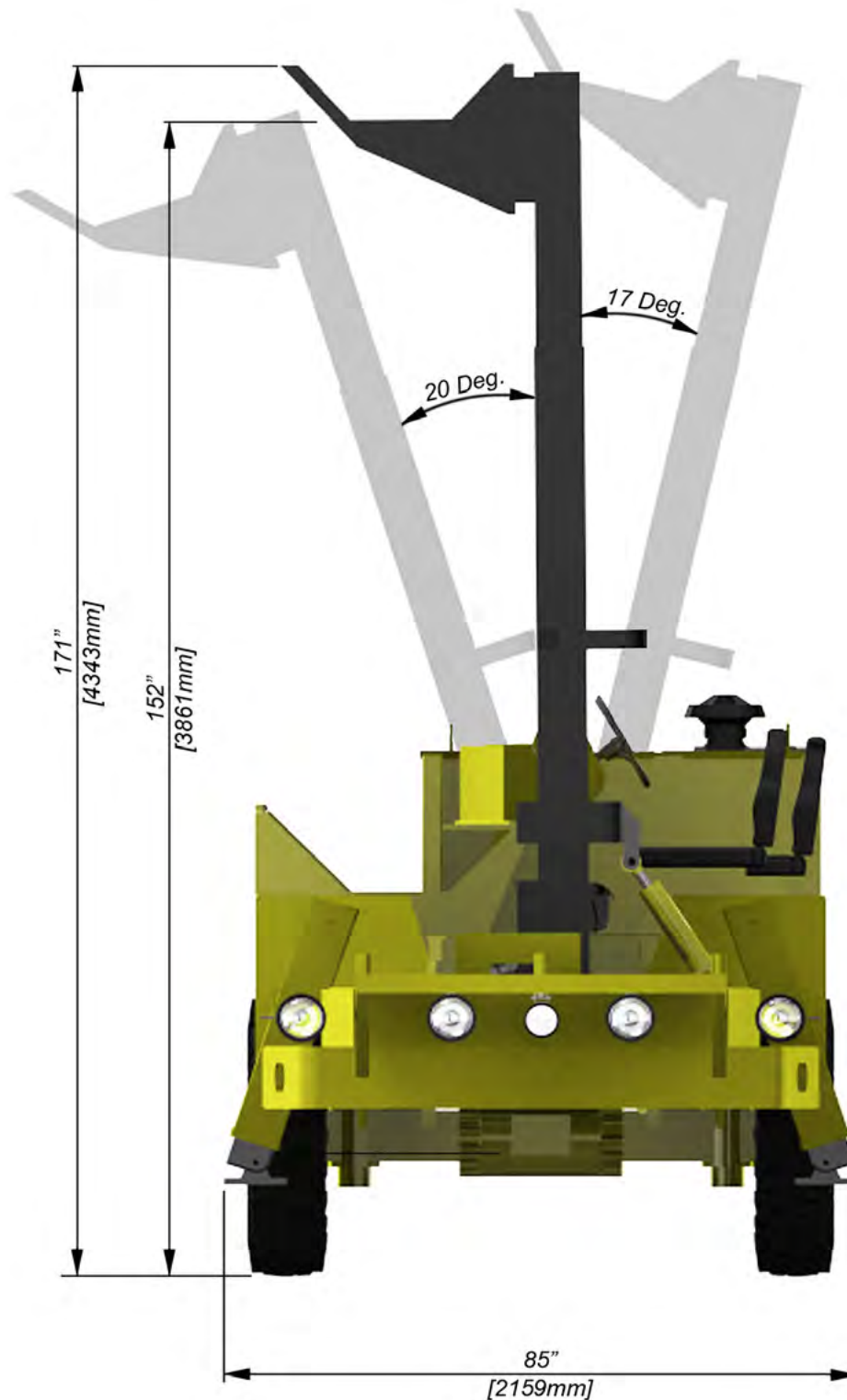


## DIMENSIONS





## DIMENSIONS





## STANDARD FEATURES

- Heavy Duty Powertrain.
- Engine: Cummins QSB4.5 Series Diesel Tier 3
- Transmission: Clark Dana 20000 Series
- Axles: Clark Dana 276 Series Steering Axle
  
- Two Wheel Steering
- Four Wheel Steering
- "Crab" Steering
- Central Lube Stations and/or Manual Lube Injection Points.
- Central Hydraulic Pressure Testing Points.
- SAE Type Hose Fittings.
  
- 24v Electrical System.
- Military Spec. Wiring System
- Electric Transmission Controls.
- Hydraulic or Electronic Operated Steering Controls.
- Manually Activated Fire Suppression System.
- Back Up Alarm.
- Emergency Steering & Braking System Accumulators.
- Hauler-LT 10.00-20 N.H.S. Tires
- Two Masts (3 Stage)
- Safety Lanyard Tie off Points





## TECHNICAL SPECIFICATIONS

### MAIN DIMENSIONS

Total Length:	287 in.	(7290mm.)
Total Width:	85.0 in.	(2159mm.)
Total Height:	99 in.	(2515mm.)
Inner Turn Radius:	105 in.	(2667mm.)
Outer Turn Radius:	224 in.	(5690mm.)
Turn Angle:	60.0 Degrees (Based on 4 Wheel Steering)	

### FRAMES

Rear and Front Frames:	Welded Steel Box Construction
Material:	G40.21 300W Plate
	G40.21 350W H.S.S

### TIRES

Tire Size:	10.00-20 N.H.S.
------------	-----------------

### ENGINE

Diesel Engine:	Cummins QSB4.5 Series Tier 3
Output:	152HP (113KW)
R.P.M:	2200
Cylinders:	4
Displacement:	275 Cubic Inch (4.5L)
Combustion Principle:	Direct Injection/Turbo Charged
Torque:	405lb-ft (549N-M)

### POWERTRAIN

Transmission:	Clark Dana 20000 Series
Axles:	Clark Dana 276 Steering Axles



## OPTIONAL EQUIPMENT

- ☐ Jake Brake
- ☐ Torque Lock Up
- ☐ Double walled exhaust
- ☐ Wrapped Exhaust
- ☐ Auto Grease System
- ☐ Heavy duty tow points
- ☐ Heavy duty rub rail system
- ☐ Easy access engine skid pan
- ☐ Radiator access points via slotted radiator shrouds
- ☐ Transmission: Electric modulated powershift
- ☐ Transmission: Hydraulic powershift
- ☐ Fire suppression: Checkfire system
- ☐ Spare Rim and Tire
- ☐ HTI Manifold and Turbo
- ☐ Pendant Remote Control for Masts