

Degelman



TELEHANDLERS

d DIECI

DEGELMAN | DIECI

A perfect match in precision manufacturing, reliability and performance.

Dieci telehandlers are superior by design, making them the choice of professionals worldwide. Do more on your operation, faster. Machines are four-wheel drive with traction to burn. Made for rough terrain, Dieci telehandlers use electronic ATP (Anti Tipping Protection) technology for peace of mind. You have the option of steering three ways: four-wheel, front-wheel and crab steer.

Ultra-modern cabs are ergonomically designed with ample space, contemporary controls, proportional joysticks, fast outrigger controls and a "go anywhere tool" at your fingertips. Auxiliary hydraulics are right there on the joystick where they should be. Maximum comfort. Maximum productivity. Fingertip proportional control hydraulics, incredible visibility and heat-resistant glass meet the demands of daily continuous use. Dieci uses some of the best components in the world including Yanmar, Iveco and Perkins engines, Rexroth, Vickers, Danfoss hydraulics and Spicer Dana differential driveshafts and axles.

Dieci telehandlers are manufactured in a state of the art Italian manufacturing facility. New vehicles and new models are growing rapidly to keep up with the demand.

Dieci's auxiliary hydraulic system and ability to accept a universal skid-steer adaptor

means you can virtually put any skid steer attachment on a Dieci. This is a multi-purpose tool that perfectly adapts to the needs of the agricultural and construction industry.

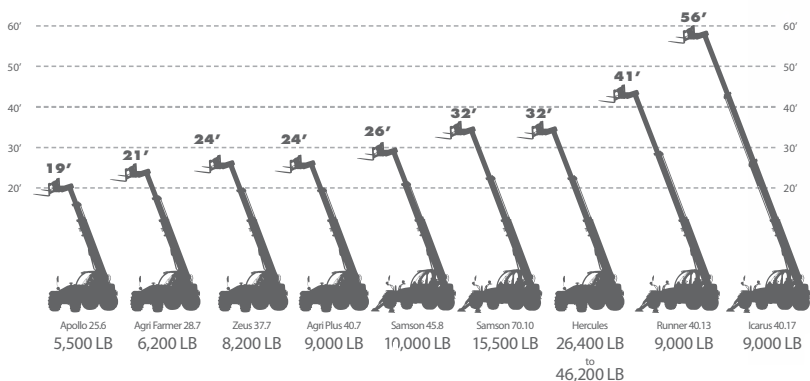
Degelman is renowned for designing and building innovative and durable equipment. Since 1963, Degelman Industries has been about providing high quality solutions to be more productive. Degelman Industries is one of Western Canada's largest and modern agricultural and industrial manufacturers and is proud to be the exclusive distributor for Dieci across Canada and the United States. Built smart. Built tough. Degelman stands behind the quality of each and every Dieci machine as if built by Degelman.

From start to finish Degelman designs, develops and manufactures attachments for Dieci telehandlers from buckets to grapples and everything in between. Under one roof is 100,000 square feet of manufacturing excellence: CNC presses, CNC milling centres, CNC lathes, electrostatic paint lines, shot peening, robotic welders, CNC saws, and heavy plate high definition punch plasma machines. Sales, service, well stocked parts and information are a phone call away. Dieci machines and attachments can be custom designed within available parameters for specific needs through the dedicated Dieci Sales and Service Department.

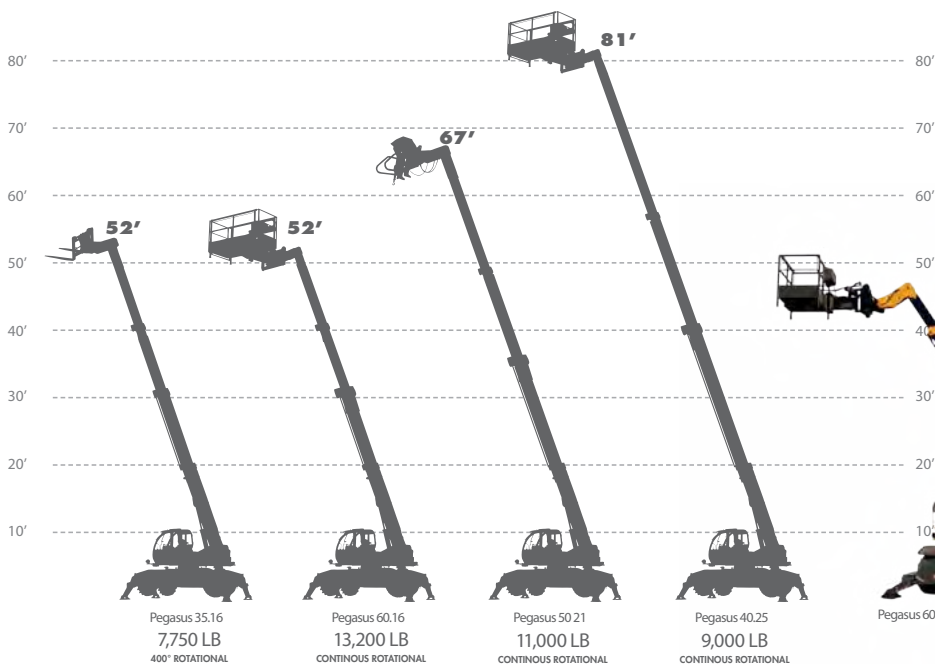




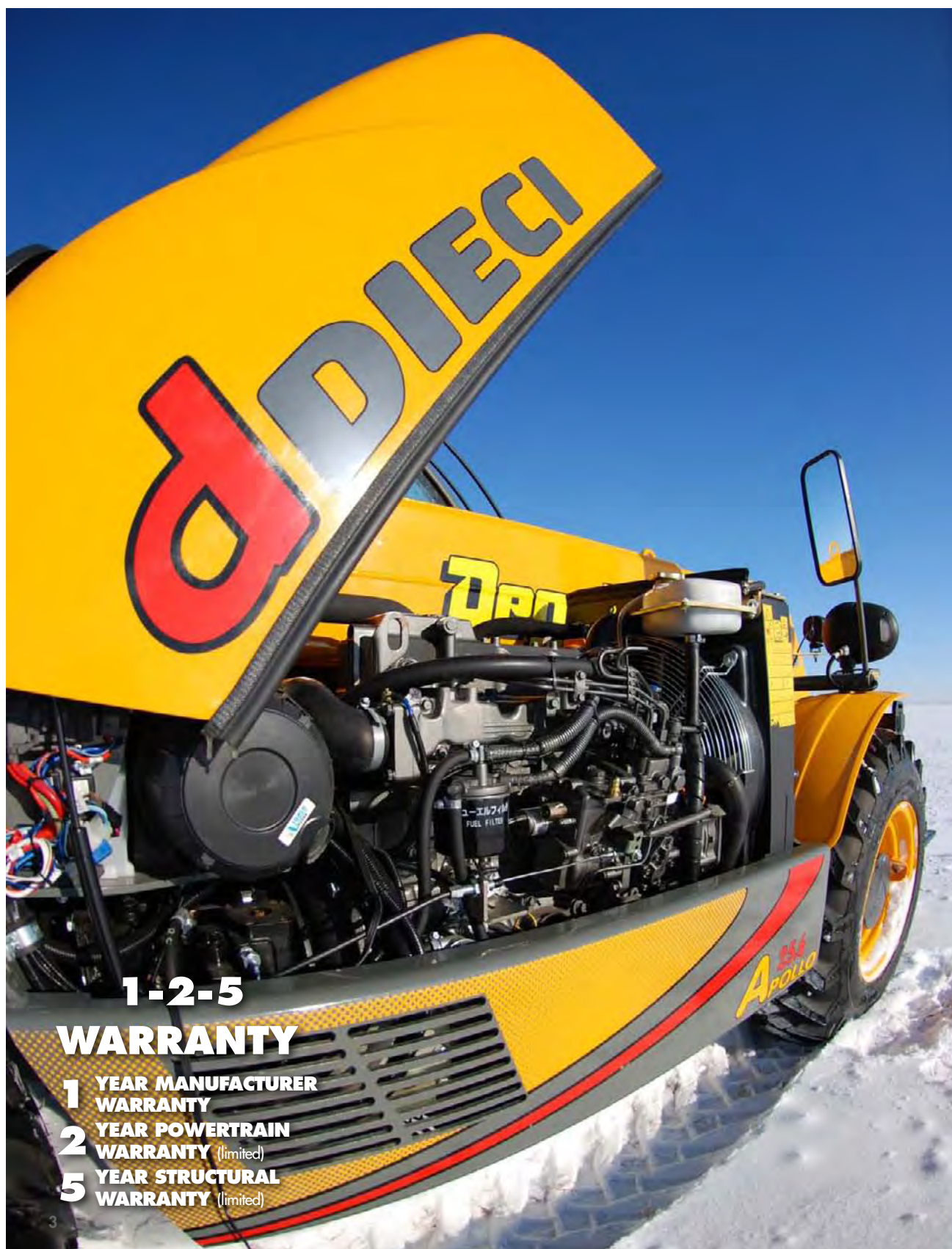
Fixed-Arm



Rotational Body



SUPERIOR DESIGN



PARTS & SERVICE



PARTS AVAILABILITY

Degelman has the parts you need for any Dieci Telehandler right here in North America. From original parts such as joysticks and cab windows to common parts such as oil filters and belts. You can get what you need quickly and easily. When equipment goes down, getting parts and service is critical. Degelman is centrally located in Regina, Saskatchewan with access to all major trade routes including the TransCanada Highway, Regina International Airport and all International Couriers. USA Parts distribution center is located in Minot, ND.

EASY ACCESS

Experienced heavy equipment owners understand the importance of regular preventative maintenance. Imagine a piece of equipment where you can get at all of the maintenance and mechanical points as easy as opening the hood of your truck. Dieci Telehandlers are designed for quick access: simply unlatching or unbolting a panel provides access to all major maintenance or

mechanical points. Dieci service points, including the combined hydrostatic transmission/hydraulic oil filter are readily accessible and major components are easy to reach from ground level due to the overall machine design.

The engine hood swings wide open for access to oil filters, oil fill, drain, radiator fluids and belts. Overriding the two gas struts on the head permits a 90° opening, allowing unencumbered engine access. Hydraulic control blocks, valves, cable trays and electrical systems are easy to access for inspection and maintenance.

Dieci telehandlers are designed to reduce time and costs by using only the very best components and providing easy access to most service points from ground level. Hydraulic diagnostic ports are standard on pumps, motors and major hydraulic blocks.

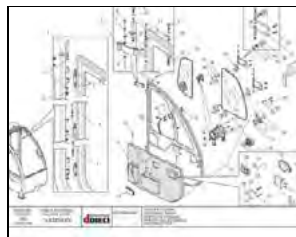


SERVICE

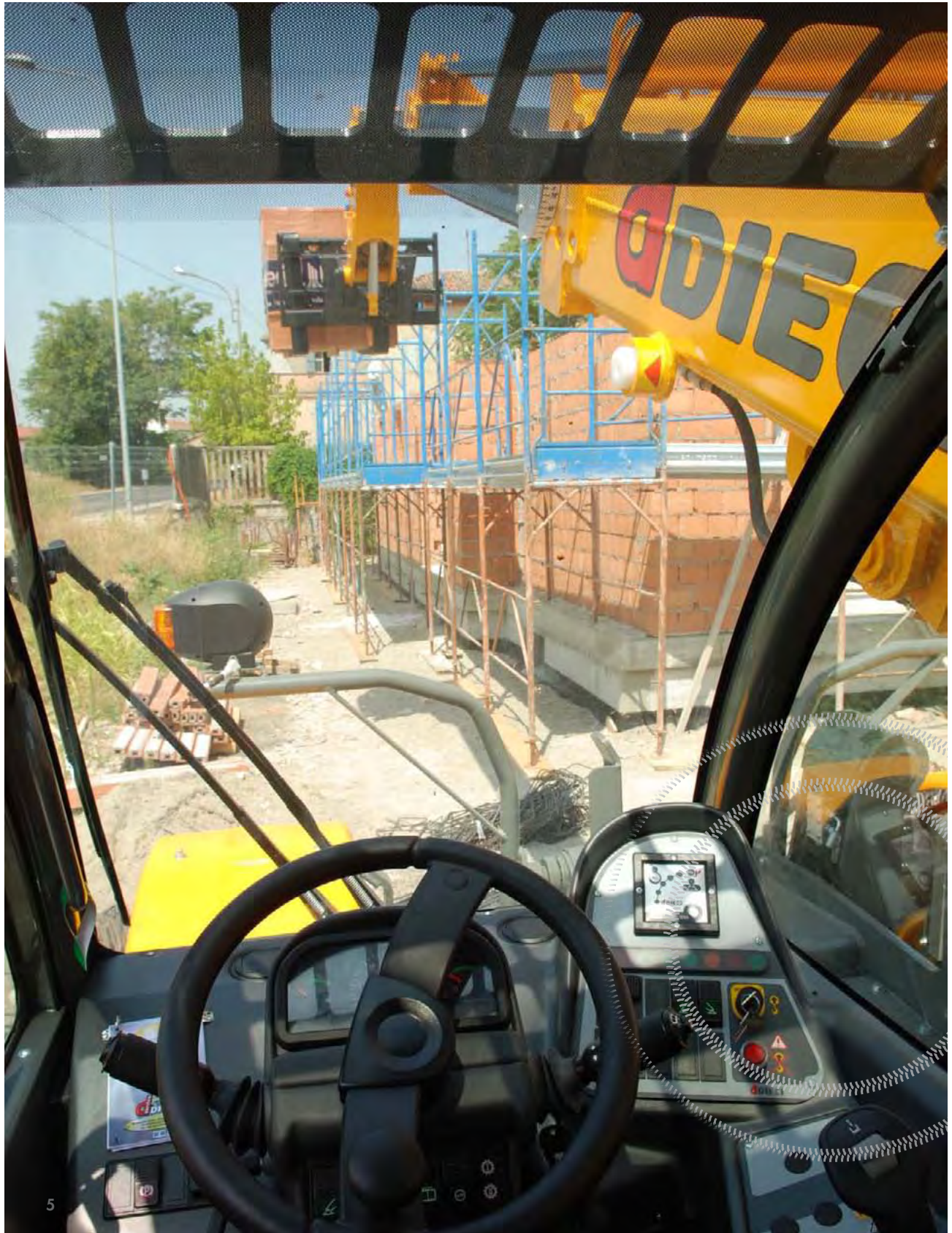
Degelman understands equipment. The dedicated Dieci/Degelman Service Team have years of combined mechanical, electrical, hydraulic and engine expertise. Degelman has over 40 years of experience with forklifts, CNC equipment, electronic controls, and sophisticated hydraulic systems. Not only does Degelman have people to help you at a nuts and bolts level but also the experience designing equipment from hydrostatic self-propelled sprayers to six-axis dozer blades custom designed for all major tractor manufacturers.

1-2-5 WARRANTY

The 1-2-5 comprehensive warranty covers the base warranty for one year, the power train for two years and structural components for five years on all new sales in Canada /USA starting 2009. With thousands of dealers and distributors worldwide, Degelman has over 40 years experience with MRP systems, Kanban systems, receiving, stocking, shipping and freight forwarding.



PRODUCT SUPPORT



SAFE, EASY OPERATION

DRIVING SIMPLICITY

Dieci telehandlers are easy to operate with basic functions that can be learned in seconds. The dashboard and control layout is logical. The single joystick controls of the fixed arm telehandlers are intuitive. The pilot-operated joystick allows three boom functions to operate simultaneously. A thumb button operates the auxiliary hydraulic functions for work tools requiring multiple hydraulic functions. Move the Switchgear forward and step on the pedal. And changing the two speed transmission is a push of a button. That is as simple as it gets.

HIGHLY MANEUVERABLE

It's not uncommon for telehandlers to encounter ditches and other obstacles in areas where they need to approach walls and raise and deliver supplies. Job sites have become more congested with multiple contractors working on sites at the same time. With a Dieci, you can flip the micro lever to skate around virtually any obstacle with three steering modes: Four-Wheel Steer, the most common, turns the machine twice as fast. Front-Wheel Steer is for normal all-around and high speed use. Crab Steer moves the machine diagonally to tack closer to structures and around obstacles. And all with four-wheel drive traction. A rear axle oscillates to smooth out the bumps. An optional steering indicator is available to help align the wheels.

SAFETY CERTIFIED

All Dieci telehandlers are CE certified and certified to the American National Standard ANSI/ITSDF

B56.6-2005, FOPS and ROPS. All elevated work platforms have also been tested and certified to CSA Standard B354.4-02.

ATP-BEYOND LOAD CHARTS

Imagine the potential consequences of tipping a telehandler. Dieci's ATP (Anti Tipping Protection) automated overload protection system brings peace of mind. Dieci telehandlers are used in the construction rental market and must be easy and safe to use even for inexperienced operators. ATP insures that operators cannot tip the machine and loads are well within the operational parameters of the machine. Load cells located in the axles take load measurements 60 times per second. A signal is sent to a microprocessor that automatically controls and overrides the hydraulic cylinders. As the operator moves his load away from the centre of gravity, a visual LED indicator bar displays the current load parameters. An additional safety audible alarm will also warn



operators as they approach maximum lift. If the operator moves past the safety envelope the telehandlers hydraulic controls shut down until the load is retracted to a safe position. ATP is standard on every Dieci telehandler.

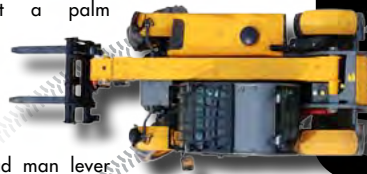


SMOOTH JOYSTICK CONTROLS

Control is light, nimble and responsive. There are minimal levers, knobs and switches. Dieci telehandlers are designed for precise handling and excellent control. The single loader lever combines raise/lower and crowd/dump functions for easy single-handed operation. First a palm

dead man lever is deployed to activate the joystick or thumb switch. This is important if you have a load lifted overhead and the joystick is accidentally bumped.

The joystick movements are intuitive and easy to understand. The proportional joystick is top of the line, silky smooth and a pleasure to operate. Coupled with a Degelman work tool, there is no end to what you can do. Up to three separate functions can be activated at once. Extend the boom out. Lift the load. Dump the bucket. An example of how one motion can save time. The speed of the joystick determines the speed of the tool. Operators run Dieci telehandlers for longer periods of time with less fatigue and operator inputs.



FRONT WHEEL STEERING



ALL-WHEEL STEERING



CONTROL & POWER



FIXED-ARM MODEL ENGINE:
STANDARD: IVECO NEF F4GE0454A - 102 HP - TC
OPTIONAL: IVECO NEF F4GE0484A - 128 HP - TA



ROTATIONAL BODY ENGINE:
STANDARD: PERKINS 1104D-ETA - 144 HP - TA
(Note: Pegasus 35.16 uses the Iveco NEF-TC Engine)



APOLLO ENGINE:
STANDARD: YANMAR 4TNV98 -71 HP



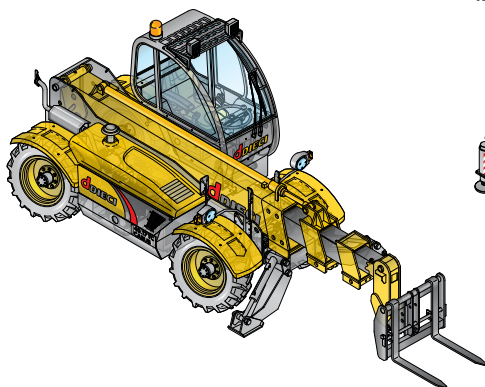
Iveco Fiat made diesel engines are Dieci's primary power source. Iveco is one of the largest truck, bus, and diesel engine manufacturers in the world and renowned for reliability. Iveco engines are used extensively in North America such as New Holland, Case IH and McCormick. For simplicity, Dieci uses one Iveco engine available in Turbo-charged at 102 HP or Turbo After-Cooler at 128 HP. Iveco engines adopt the most advanced technologies available on the market today: innovative architecture, multi-valve systems, turbo-compressors with fixed and variable geometry, latest-generation mechanical injection systems, high pressure common rail injection. Engines satisfy Stage 3 Emission Standards USA EPA Tier 3.

The Perkins Turbo After-cooler 144 HP engine is reserved for the higher horsepower Dieci Rotational machines: Pegasus 40.25, 50.21 and the 60.16. For more than 75 years Perkins Engines Company has manufactured diesel engines and power solutions with the highest levels of performance and reliability. Perkins parts are available from coast to coast with a distributor and dealer network in over 100 locations. Degelman provides you with easy access to parts and service support. The Turbo-Cooled Perkins on the rotating Pegasus is Tier 3 compliant and is the ultimate power solution. Increase in power, lower fuel consumption and a minimal rise in heat rejection. Noise is also minimised at the source - engine sound levels have been reduced by up to 1 dBA. Perkins also have a low operating cost with low service intervals.

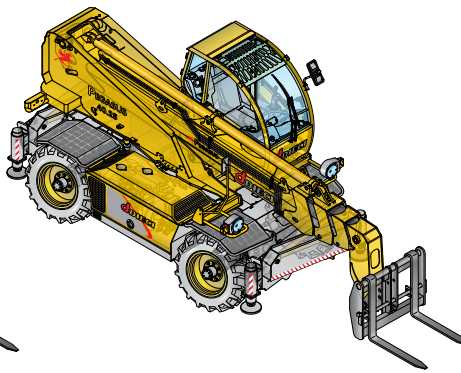
Yanmar is renowned for building extremely reliable compact diesel engines and is the perfect match for the Super Compact Apollo. This Yanmar 71 HP engine has one of the highest power densities in its class and simply one of the most reliable compact diesel engines available. The TNV Series is a four-cylinder vertical, inline, 4-cycle, water-cooled diesel engine that utilizes indirect fuel injection. Common parts are readily available from Degelman or through a North American wide Yanmar dealer network.

POWERTRAIN & TRANSMISSION

FIXED-ARM MACHINE



ROTATIONAL BODY MACHINE



DANA & REXROTH MAXIMUM TRACTION & MAXIMUM CONTROL

Dieci's open-center hydrostatic system working with Spicer axles and drive shafts puts the power to the ground. Try to get it stuck. The powerful and efficient drive system enables a Dieci telehandler to work flexibly and precisely in the most demanding situations. Dana drives are used by virtually every major off highway vehicle manufacturer. Dana has a track record for traction, steering and reliability in rough terrain. The transmission is hydrostatically powered by a

premium Rexroth variable displacement pump and motor. Two-speed gear changing and reverse is smooth and automatic - provided by a servo controlled electric-over-hydraulic system. The planetary reduction provides ample four-wheel drive traction.

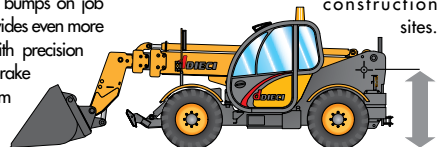


SPICER
Drivetrain Products

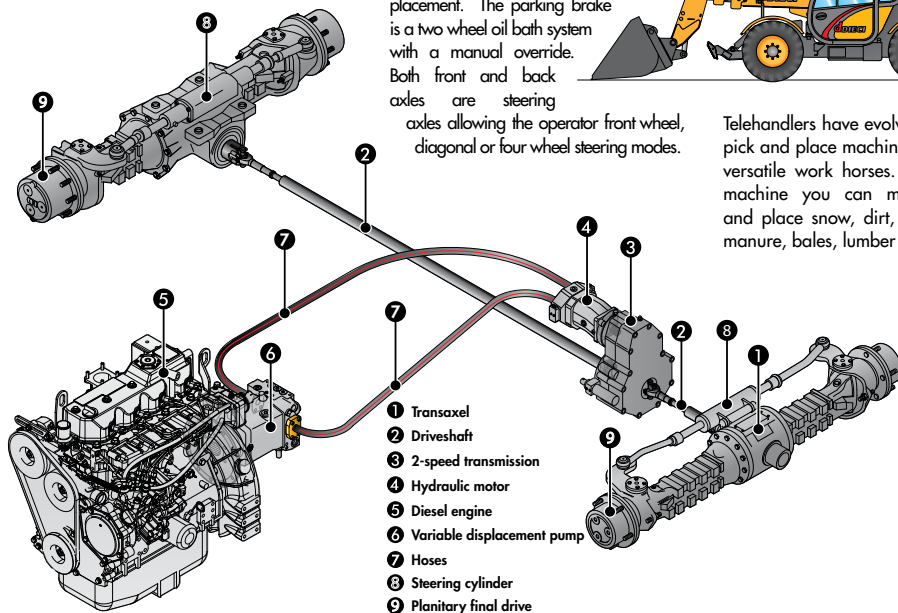
The front axle is rigid and the rear axle oscillates to smooth out the bumps on job sites. An inching pedal provides even more control moving forward with precision placement. The parking brake is a two wheel oil bath system with a manual override. Both front and back axles are steering axles allowing the operator front wheel, diagonal or four wheel steering modes.

LOWER PIVOT POINT HIGHER PUSHING FORCE

Telehandlers with a lower pivot point are designed to push more and can be used with a wide scope of attachments. Dieci telehandlers are designed with high mount cabs and side-mounted engines that provide excellent 360° visibility yet provide a lower boom pivot. The tool handling capabilities of Dieci telehandlers is a must on today's demanding high-productivity construction sites.



Telehandlers have evolved from simple pick and place machines to all around versatile work horses. With the right machine you can move, lift, level and place snow, dirt, pallets, gravel, manure, bales, lumber and silage.



HIGH PERFORMANCE



TOP OF THE LINE HYDRAULICS

FAST, CAPABLE HYDRAULICS

The heart of a superior telehandler is superior hydraulics. Dieci use top of the line hydraulics: variable displacement pumps, variable displacement motors, a variety of joysticks, solenoids, and control blocks. The hydraulic focus was not on the single hydraulic component but on the whole machine function. Components are



made for each other; perfectly adjusted to each other with a minimum of interfaces. Electrical, cable trays and hydraulic lines are neatly detailed and organized. This efficient hydrostatic drive system is reliable, economically efficient and the ease of operation creates a superior telehandler. Dieci pioneered the working hydraulics, electric proportional pump control systems and the flow sharing control. All joystick controls are precise and smooth. Boom control is straight forward; telescope and lift functions perform smoothly and precisely. The post spool pressure compensating on the main implement valve ensures three-function flow sharing even when valve demand exceeds pump output. Flow sharing is achieved regardless of loading on each circuit, making smooth boom movements easy even for inexperienced operators. Higher capacity hydraulic pumps are available.



Rexroth
Bosch Group



STABILIZERS

At the flip of a switch, stabilizers are quickly deployed, levelling the machine and dramatically increasing the working lift and reach envelope. Regardless of the machine being a fixed arm unit with two stabilizers or a rotational body unit with four stabilizers, setting the side outriggers is fast. One or all four stabilizers can be deployed at the same time to further increase productivity.

AUXILIARY HYDRAULICS.

A WORLD OF POSSIBILITIES. To get the most of your Dieci machine, optional multiple hydraulic ports are recommended. The Dieci hydraulic system has 3300 psi of auxiliary pressure and up to 26 GPM of flow. At least one single auxiliary hydraulic system on telehandlers is preferred. Auxiliary hydraulics allows the use of powered attachments such as sweepers, augers and rotating and swing carriages. If the machine will be used in cleanup work, a dual-flow hydraulic system can actuate a grapple arm or thumb on a bucket to facilitate removing bulky trash and debris.

Dieci telehandlers excel at material handling. The available auxiliary hydraulic system opens up new possibilities that tackle a wider variety of jobs. Dieci telehandlers are a productive alternative to using

a small wheel-loader or backhoe.

As long as operators avoid being overly aggressive and keep the boom retracted when rooting and extracting material, a whole new dimension of productivity can be added without compromising the telehandler's original strengths.

The same concept holds true for the use of other attachments. Many contractors no longer feel the need to add backhoes or skid-steer loaders to their fleets to operate attachments, understanding their telehandlers can now handle augers, sweepers and even small hammers and breakers when not lifting heavy payloads.

HYDRAULICS AT A GLANCE

- Precise and smooth proportional joystick controls
- Hydrostatic four-wheel drive allows automotive steering with four-wheel drive traction
- Inching Pedal for sensitive load placements
- Wear-free braking and jerk-free acceleration
- Fast change of direction through variable displacement pump reversal
- High handling capacity
- Diagnostic ports on all major hydraulic components



Additionally, to keep pallets parallel to the ground traditional telehandlers use secondary master cylinders of equal displacement as the boom head cylinder. This second cylinder adds unnecessary frequently moving parts and often blocks the view of the operator. Dieci incorporates a patented design using a "cylinder within a cylinder" to increase visibility, longevity and reduce unnecessary components.

HYDRAULIC SYSTEMS



FIXED ARM CAB: STANDARD CAB FOR ALL MODELS,
VARIETY OF OPTIONS AVAILABLE

SPACIOUS MODERN CABS

Dieci cabs are comfort redefined. This is not an after thought cab. It is roomy, modern and it is not surprising that Dieci cabs are designed by an Italian car designer. They are the most driver-focused telehandler cab on the market. The fully adjustable suspension seat is as comfortable as it gets. A nicely padded arm rest and steering wheel that tilts to fit the operator makes for an easier work day. All of the normal creature comforts are standard and a Winter Kit is available.

PRODUCTIVE OPERATORS

A comfortable work environment can reduce operator turnover while allowing operators to work more comfortably for longer hours. Operators can sometimes be difficult to find. While putting in longer hours, comfort is important. Not only are telehandlers in general enjoyable to operate, the Dieci machines are a great experience. Quiet. Ergonomic. Modern. Operators will have less fatigue.

INTUITIVE CONTROL LAYOUT

Switches have been grouped on the dashboard ahead of the joystick. Controls are logical, visible and functional. The operator is simply pampered. Every function is neatly organized with unmatched automotive fit and finish: oversized controls, rubberized buttons and an ergonomic proportional joystick all to maximize productivity.



- | | |
|---|---|
| 1 Forward / Reverse Lever | 7 Anti-tipping Override Button |
| 2 Dash (Fuel Gauge/Engine Tachometer w/Hour Meter/ Temperature Gauge) | 8 Proportional Joystick Control (4 in 1 shown) |
| 3 Assortment of control switches | 9 Stabilizer Raise/Lower Switch |
| 4 Hi/Low Range Selector Switch (2-speed drive) | 10 Fully Adjustable Deluxe Seat (Air-ride Optional) |
| 5 Anti-tipping Computer | 11 Tilt Steering Column |
| 6 Transverse (SWAY) Levelling Switch | 12 Steering Mode Selector |
| | 13 Attachment Selection Switch |
| | 14 Level Indicator |

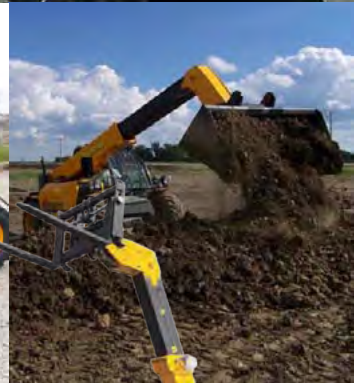
From the quiet climate controlled cab to the right side ergonomic armrest, tilt steering column, rubberized controls, this cab is as good as they get. A wide swing-a way door and 180° split window swing and lock into place for enhanced communication between the operator and ground crew. An overhead sunroof opens for fresh air. A chart holder puts operating information within easy reach. The engine throttle and foot brake pedals are positioned for comfortable use. Everything about the Dieci telehandler cab is designed with the operator in mind.



FIXED ARM CAB



Open cab design - available upon request



APOLLO 25.6

Made for general construction, landscaping, lumber yards, nursery, industrial and agricultural applications. Unbelievable reach. Panoramic view. Gorgeous comfortable cab. Easy low-profile side access and an over-sized window. Unlike skid steer loaders, the operator does not have to step over the top of the attachment. Interchange skid steer attachments with a Degelman skid steer adapter. The four-wheel drive traction alone for example, will allow operators to walk over a snow pile where a skid steer would normally slip. Low-access buildings, barns, quonsets and parking garages are not a problem. When the job site is crowded, the last thing needed is another big machine to manoeuvre. The Dieci Super Compact

Apollo gets the job done. Compatible with any skid steer attachment, this machine is not only manoeuvrable with its three steering modes, but it can lift, dump, place and reach like no other tool.

Ready for the most crowded of job sites, these machines are the perfect combination of agility, comfort and versatility. Dieci Apollo was designed with a very low machine height, tight turning radius, compact footprint and a side mounted Yanmar diesel engine with power to burn.





AGRI FARMER 28.7

The Agri Farmer is the most common sized machine used in the Poultry Industry. The Agri Farmer is a step up from the Apollo exceeding it in lift height, capacity and horsepower while maintaining a low profile. Like all Dieci telehandlers, they are multi-function machines and can be used for many operations.

Operators who own the Agri Farmer do not know what they would do without them. There is endless amount of tasks that can be handled that no other farm tool can handle. Telehandlers are a common workhorse on many

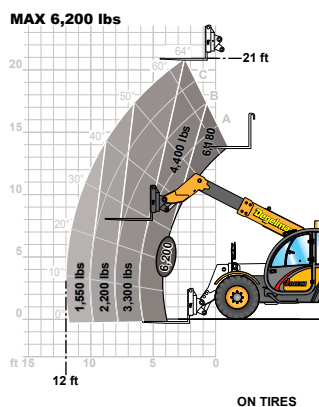
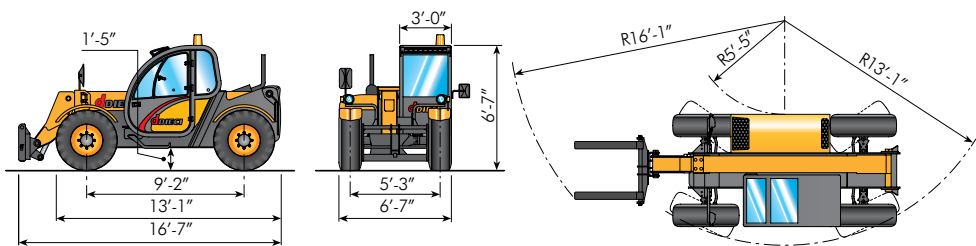
European farms and North American farmers are starting to see why. The Agri Farmer can lift as high as 21 feet twice the height of a front-end loader.

The machine is nimble and can move in directions normally not possible and with the four-wheel drive power.

Degelman makes all the options from pallet forks to buckets to bale forks all with slick hydraulic Quick-Tach system. Stay in the cab while changing attachments any attachment. Degelman also makes an adaptor to convert the Agri Farmer to all Skid Steer attachments as well.



AGRI FARMER 28.7



PERFORMANCE

Maximum lifting capacity.....	6,200 lbs
Maximum lifting height	21 ft
Maximum reach.....	12 ft
Fork angle.....	130 °
Towing Force	16,410 lbf
Breakout Force	12,814 lbf
Maximum allowable slope.....	40 %
Total empty weight	13,200 lbs
Max speed.....	22 mph



TRANSMISSION

Transmission Hydrostatic with variable capacity pump	
Hydraulic engine.....	Automatic change
Gear reversing.....	Electro hydraulic
Inching pedal for controlled forward movement	
Servo controlled 2 speed gearbox	



HYDRAULIC CIRCUIT

Gear pump at full capacity.....	23 gal/min
Max working pressure.....	3,336 PSI
Proportional joystick controls.....	4 in 1



DIFFERENTIAL AXLES

Steering axles.....	2, with planetary reduction gears
Type of steering.....	4 wheels / crab / 2 wheels
Front axle.....	Rigid
Rear axle.....	Oscillating



ENGINE

ENGINE PERKINS TURBO - 102 hp	
Maximum power.....	102 hp at 2,200 rpm
Type, injection.....	four-stroke diesel engine
Cylinders number and layout.....	4, vertical in line
Displacement.....	274 cu. in. - Turbo compressor
Cooling system.....	liquid



TANK CAPACITY

Hydraulic circuit.....	34 gallons
Fuel tank.....	16 gallons



STANDARD DEVICES

CE certified, ANSI/ITSDF B56.6.205, CSA Standard B354.4-02
Anti-tipping device with block for hazardous movements
Closed soundproof homologated cab ROPS - FOPS, with heating
Hydraulic coupler for possible accessories on boom head
Self-locking front axle differentials (LIMITED SUP 45%)



TIRES

Standard (INDUSTRIAL LUG).....	12.5/18"
--------------------------------	----------



LOW PROFILE AG

" With a lift capacity equalling medium sized pay loaders, our Agri Plus can operate that 4 yard bucket with heaping scoops of the heaviest feedlot manure you can find and still load the spreader outside the pen. It's only half the weight of many pay loaders and this machine can load tall sided mixer wagons and manure spreaders that extended reach pay loaders struggle with to get high enough.

When operating on side hills, the machine remains steady and we love the four wheel steer compared to tippy articulated pay loaders.

The Agri Plus will load in 5 scoops compared to 17 to our tractor with front end loader. We like the road speed and quick hydraulics and use this machine everyday in our operation."

Don Bowyer & Daryl Paskewitz
Sunny Slope Cattle Co. / Maple Creek, SK



AGRIPLUS 40.7

The perfect machine for most agricultural operations!

Super lifting capacity of 9,000lbs and a reach height of 24 feet no farm job is too big.

Equipped with a powerful IVECO 128hp Turbo After-cooled 4 cylinder diesel engine coupled with a Clark (Dana/Spicer) Power-shift transmission.

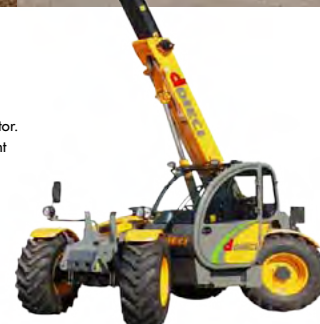
The 4-forward and 3-reverse gear integral Converter-Transmission Unit provides a smooth transition from forward to reverse and reaches a

maximum travel speed of 25 MPH.

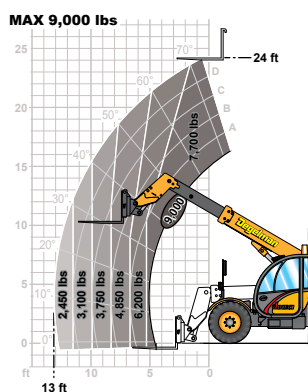
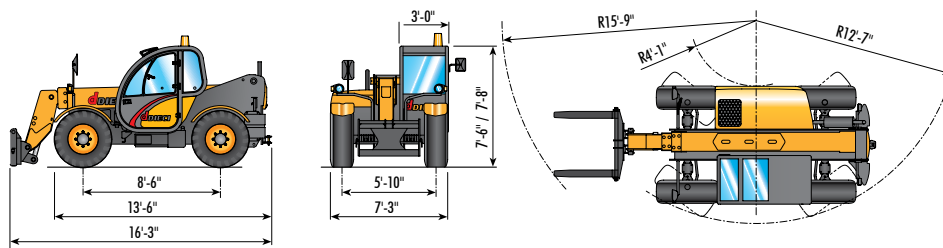
Easy clean out with rear radiator fan and fold down radiator.

Tight turning radius provides excellent maneuverability in tight spaces such as feed lots and dairy operations.

Two wheel, four wheel and crab steering are standard on every machine.



AGRIPLUS 40.7



PERFORMANCE

Maximum lifting capacity.....	9000 lbs
Maximum lifting height.....	24 ft
Maximum reach.....	13 ft
Fork angle.....	130°
Towing force	16,410 lbf
Breakout Force	12,814 lbf
Maximum allowable slope.....	40 %
Total empty weight	15,840 lbs
Max speed.....	25 mph



TRANSMISSION

Dana/Spicer (Clark) 4 Forward, 3 Reverse gears Powershift transmission with integral torque converter



HYDRAULIC CIRCUIT

Gear pump at full capacity.....	26 gal/min
Max working pressure.....	3336 PSI
Proportional joystick controls.....	4 in 1



OPTIONAL EQUIPMENT

Air Conditioning
Rear Hydraulics
Hydraulic Reversing Fan
Hydraulic Quick Attachment
Addition Hydraulic Pump for larger hydraulic volume
"Easy Ride" Boom Suspension
Full Lighting Package



DIFFERENTIAL AXLES

Dana/Spicer steering axles...2, with 6:1 planetary reduction gears
Type of steering.....4 wheels / crab / 2 wheels
Front axle.....Rigid
Rear axle.....Oscillating



ENGINE

ENGINE IVECO TA - 128 hp
Maximum power.....128 hp at 2,300 rpm
Operating principle.....four-stroke engine diesel
Cylinders number and layout.....4, vertical in line
Displacement 274 cu. in. - Turbo After-cooled compressor
Cooling system.....liquid



TANK CAPACITY

Hydraulic circuit.....	37 gallons
Fuel tank.....	25 gallons



STANDARD DEVICES

CE certified, ANSI/ITSDF B56.6.205, CSA Standard B354.4-02
Anti-tipping device with block for hazardous movements
Hydraulic coupler for possible accessories on boom head
Closed soundproof homologated cab ROPS - FOPS, with heating
Front self-locking axle (limited slip 45%)



TIRES

Standard (OVERSIZED).....445/65-22.5"



ALL PURPOSE AG



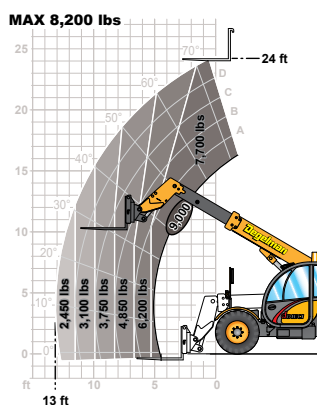
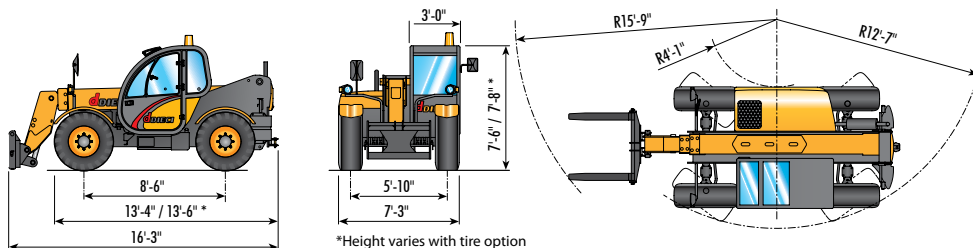
ZEUS 37.7

Multi - use. Operators find this ideal with its excellent lifting capability, power and manoeuvrability. 8200 lb capacity with a generous 24' reach.

It is nimble and small enough to work around tight job sites with an inside turning radius of just 48". Zeus can virtually turn right around a 4'x8' sheet.



ZEUS 37.7



PERFORMANCE

Maximum lifting capacity.....	8200 lbs
Maximum lifting height.....	24 ft
Maximum reach	13 ft
Fork angle.....	130 °
Towing force	16,410 lbf
Breakout Force	12,814 lbf
Maximum allowable slope.....	40 %
Total empty weight	15,840 lbs
Max speed.....	19 mph
(on request 25 mph with TA engine)	



TRANSMISSION

Transmission	Hydrostatic with variable capacity pump
Hydraulic engine.....	Automatic change
Gear reversing.....	Electro hydraulic
Inching pedal for controlled forward movement	
Servo controlled 2 speed gearbox	



HYDRAULIC CIRCUIT

Gear pump at full capacity.....	26 gal/min
Max working pressure.....	3336 PSI
Proportional joystick controls.....	3 in 1 or 4 in 1



DIFFERENTIAL AXLES

Steering axles.....	2, with planetary reduction gears
Type of steering.....	4 wheels / crab / 2 wheels
Front axle.....	Rigid (levelling on request)
Rear axle.....	Oscillating



ENGINE

ENGINE	IVECO NEF F4GE0454A - TC - 102 hp
Maximum power.....	102 hp at 2300 rpm
Operating principle.....	four-stroke engine diesel
Cylinders number and layout.....	4, vertical in line
Displacement.....	274 cu. in. - Turbo compressor
Cooling system.....	liquid
ENGINE	IVECO NEF F4GE0484C - TA - 128 hp (Optional)
Maximum power.....	128 hp at 2,300 rpm
Operating principle.....	four-stroke engine diesel
Cylinders number and layout.....	4, vertical in line
Displacement.....	274 cu. in. - Turbo Aftercooled compressor
Cooling system.....	liquid



TANK CAPACITY

Hydraulic circuit.....	37 gallons
Fuel tank.....	25 gallons



STANDARD DEVICES

CE certified, ANSI/ITSDF B56.6.205, CSA Standard B354.4-02	
Anti-tipping device with block for hazardous movements	
Hydraulic coupler for possible accessories on boom head	
Closed soundproof homologated cab ROPS - FOPS, with heating	
Front self-locking axle (limited slip 45%)	



TIRES

Standard (INDUSTRIAL LUG).....	16/70x20"
--------------------------------	-----------

Optional (INDUSTRIAL LUG).....	405/70x24"
--------------------------------	------------

Optional (OVERSIZED).....	445/65-22.5"
---------------------------	--------------



MULTITASKING



HERCULES

Introducing the ultimate lifting capacity in a telehandler, the NEW Hercules models can now lift up to 46,200 lbs. We are pleased to introduce three models of Hercules starting with model 120.10 which lift 26,400 lbs, the model 160.10 lifts 35,200 lbs and the big 210.10 can lift 46,200 lbs. All three models reach up to 31' with their strong single boom. With this size of machine, we need all the controls from the cab with Quick-Tach, Fork Positioning and Side Shift. The Hercules is outfitted with the same new style cab as the Pegasus complete with anti-tipping as

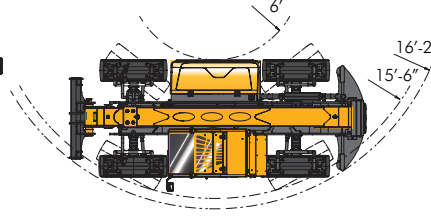
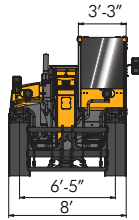
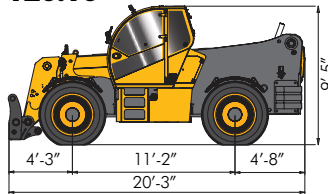
well. Loading and positioning is safe as the ATP anti tipping protection protects the machine from over-loading.

The Hercules is powered by Perkins with the 4 cylinder 144 horsepower for the smaller 120.10, the smooth 6 cylinder 196 for both the 160.10 and 210.10.

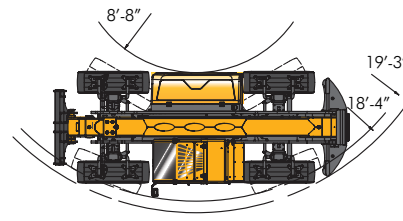
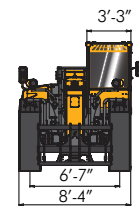
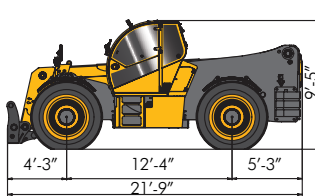


HERCULES

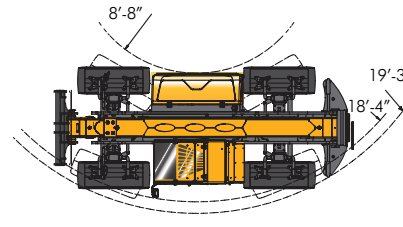
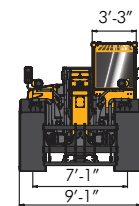
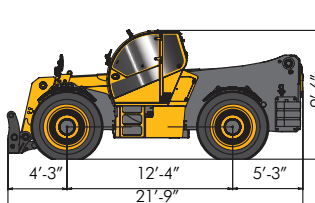
120.10



160.10



210.10



HERCULES	MODEL 120.10	MODEL 160.10	MODEL 210.10
Maximum Capacity	26,400 lbs	35,200 lbs	46,200 lbs
Lift Height	32'	32'	32'
Maximum speed	17 mph	17 mph	16 mph
Empty Weight	39,682 lbs	52,910 lbs	59,400 lbs
Maximum Horizontal Reach	17'	16'	15'
Engine	144 HP Perkins 4 cylinder turbo after-cooled	196 HP Perkins 6 cylinder turbo after-cooled	196 HP Perkins 6 cylinder turbo after-cooled
Cooling	Liquid	Liquid	Liquid
Transmission	Hydrostatic Transmission with variable displacement pump. Permanent 4WD. Low and High Speed Gearing.		
Hydraulic Quick-Tach	Standard	Standard	Standard
Steering	2 Wheel, 4 Wheel & Crab Steering are all Standard		
Tires	16.00 R25 XRB	18.00 R25 XRB	23.5 R25 XMA
Transverse Sway Levelling	Standard	Standard	Standard
Hydraulic/Electrical Setup	Lifting Attachments, Man Basket & Centering are all Standard.		
Electronic Accelerator	Standard	Standard	Standard
Digital Clock	Standard	Standard	Standard
Forks	4', 6' or 8' Forks c/w Hydraulic Fork Positioning and Side Shift are Standard. Pick fork size		
Fuel Tank	74 U.S. Gallon	74 U.S. Gallon	74 U.S. Gallon
Hydraulic Oil	79 U.S. Gallon	79 U.S. Gallon	79 U.S. Gallon
Lights	Head Lights, Tail Lights, Signal & Brake are Standard. All Working Lights and Boom Light are ordered.		
Parking Brake	Negative Park Brake	Negative Park Brake	Negative Park Brake
Cab	ROPS & FOPS Approved	ROPS & FOPS Approved	ROPS & FOPS Approved
ATP Anti-Tipping Protection	Standard	Standard	Standard
Other Equipment	Full Range engine Cover, Back up Alarm, Tow Hook, All Engine Guages, Seat belts, Boom Angle Indicators, Self Cleaning Filters		



RUNNER 40.13

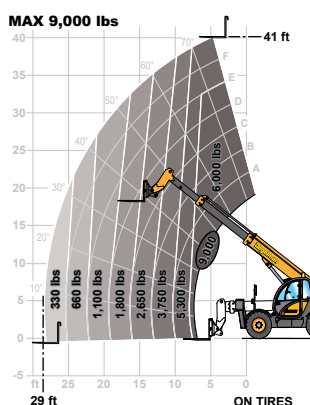
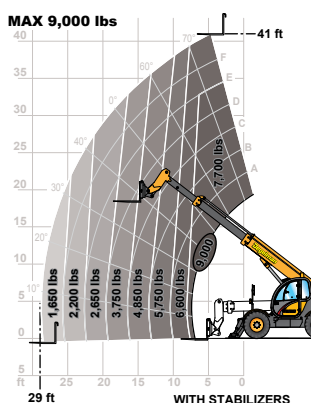
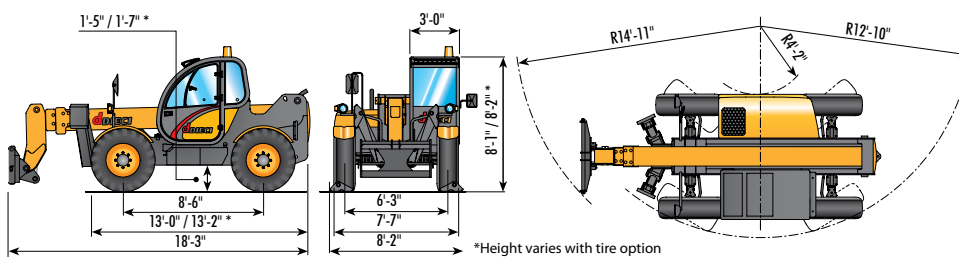
The Runner is a contractor's best tool and an all around workhorse for most building applications. They are the perfect rough terrain telehandler used in the rental market for their capacities, simple boom, durability and ease of use. They have the best lift and capacity for most midrange construction applications. With a lift capacity of 9,000 LBS and 41 foot reach of smooth two-section maintenance free boom, this machine performs at any jobsite. Day in. Day out.

Equipped with twin front axle-mounted stabilizers, sway control, ATP Anti Tipping Protection as well as a panoramic view cab. Productivity will increase

as operators are safe and comfortable during long work days. Features such as three steering modes, four-wheel drive and four-in-one proportional joystick control offer smooth, reliable performance for rugged work site conditions. Runner's are not just strictly pick and place tools either. They can be used to clean up job sites with a dozer blade or bucket with its low pivot point boom. Most attachments are available on a Runner providing total versatility.



RUNNER 40.13



PERFORMANCE

Maximum lifting capacity.....	9,000 lbs
Maximum lifting height.....	41 ft
Maximum reach.....	29 ft
Fork angle.....	134 °
Towing force.....	16,410 lbf
Breakout Force.....	12,814 lbf
Maximum allowable slope.....	40 %
Total empty weight.....	22,220 lbs
Max speed.....	19 mph
(on request 25 mph with TA engine)	



TRANSMISSION

Transmission Hydrostatic with variable capacity pump	
Hydraulic engine.....	Automatic change
Gear reversing.....	Electro hydraulic
Inching pedal for controlled forward movement	
Servo controlled 2 speed gearbox	



HYDRAULIC CIRCUIT

Gear pump at full capacity.....	26 gal/min
Max working pressure.....	3,336 PSI
Proportional joystick controls.....	3 in 1 or 4 in 1



DIFFERENTIAL AXLES

Steering axles.....	2, with planetary reduction gears
Type of steering.....	4 wheels / crab / 2 wheels
Front axle.....	Rigid (levelling on request)



ENGINE

ENGINE IVECO - TC - 102 hp	
Maximum power.....	102 hp at 2,300 rpm
Operating principle.....	four-stroke engine diesel
Cylinders number and layout.....	4, vertical in line
Displacement.....	274 cu. in. - Turbo compressor
Cooling system.....	liquid
ENGINE IVECO NEF F4GE0484C - TA - 128 hp (optional)	
Maximum power.....	128 hp at 2,300 rpm
Operating principle.....	four-stroke engine diesel
Cylinders number and layout.....	4, vertical in line
Displacement 274 cu. in. - Aftercooler turbo compressor	
Cooling system.....	liquid



TANK CAPACITY

Hydraulic circuit.....	44 gallons
Fuel tank.....	28 gallons



STANDARD DEVICES

CE certified, ANSI/ITSDF B56.6-205, CSA Standard B354.4-02	
Anti-tipping device with block for hazardous movements	
Hydraulic coupler for possible accessories on boom head	
Closed soundproof homologated cab ROPS - FOPS, with heating	
Front self-locking axle (limited slip 45%)	
Stabilizers with independent hydraulic tilting	



TIRES

Standard (INDUSTRIAL LUG).....	16/70x20"
Optional (INDUSTRIAL LUG).....	405/70x24"
Optional (OVERSIZED).....	445/65-22.5"



CONTRACTOR / RENTAL



SAMSON 45.8

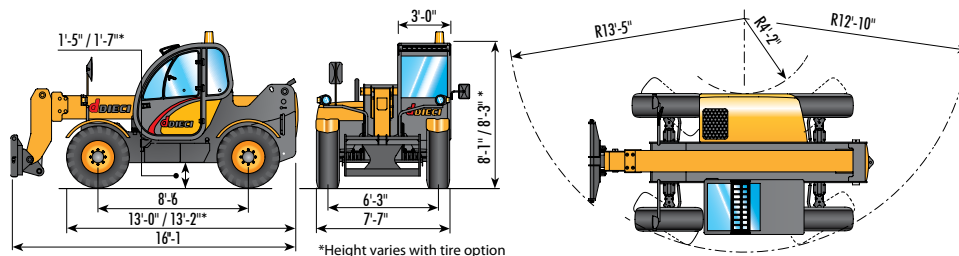
This machine has been a favorite among equipment dealers and manufacturers within their own operation.

When muscle is more important than height, the Samson 45.8 is the answer. The machine is designed to have ample lift

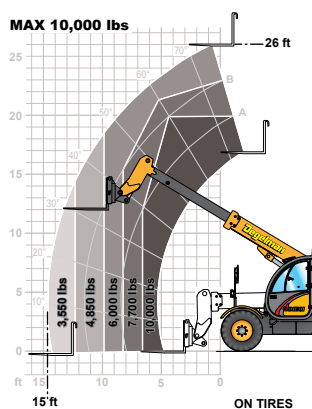
capacity without the use of stabilizers. Both Samson models use the simplicity and strength of a single boom.



SAMSON 45.8



*Height varies with tire option



PERFORMANCE

Maximum lifting capacity.....	10,000 lbs
Maximum lifting height.....	26 ft
Maximum reach.....	15 ft
Fork angle.....	134 °
Towing force.....	16,410 lbf
Breakout Force.....	12,814 lbf
Maximum allowable slope.....	40 %
Total empty weight.....	16,060 lbs
Max speed.....	19 mph
(on request 25 mph with TA engine)	



TRANSMISSION

Transmission	Hydrostatic with variable capacity pump
Hydraulic engine.....	Automatic change
Gear reversing.....	Electro hydraulic
Inching pedal for controlled forward movement	
Servo controlled 2 speed gearbox	



HYDRAULIC CIRCUIT

Gear pump at full capacity.....	26 gal/min
Max working pressure.....	3,336 PSI
Proportional joystick controls.....	3 in 1 or 4 in 1



DIFFERENTIAL AXLES

Steering axles.....	2, with planetary reduction gears
Type of steering.....	4 wheels / crab / 2 wheels
Front axle.....	Rigid (levelling on request)
Rear axle.....	Oscillating



ENGINE

ENGINE IVECO - TC - 102 hp	
Maximum power.....	102 hp at 2,300 rpm
Operating principle.....	four-stroke engine diesel
Cylinders number and layout.....	4, vertical in line
Displacement.....	274 cu. in. - Turbo compressor
Cooling system.....	liquid
ENGINE IVECO NEF F4GE0484C - TA - 128 hp (optional)	
Maximum power.....	128 hp at 2,300 rpm
Operating principle.....	four-stroke engine diesel
Cylinders number and layout.....	4, vertical in line
Displacement.....	274 cu. in. - Aftercooler turbo compressor
Cooling system.....	liquid



TANK CAPACITY

Hydraulic circuit.....	41 gallons
Fuel tank.....	28 gallons



STANDARD DEVICES

CE certified, ANSI/ITSDF B56.6.205, CSA Standard B354.4-02	
Anti-tipping device with block for hazardous movements	
Hydraulic coupler for possible accessories on boom head	
Closed soundproof homologated cab ROPS - FOPS, with heating	
Front self-locking axle (limited slip 45%)	



TIRES

Standard (INDUSTRIAL LUG).....	16/70x20"
Optional (INDUSTRIAL LUG).....	405/70x24"
Optional (OVERSIZED).....	445/65-22.5"



HEAVY LIFT



SAMSON 70.10

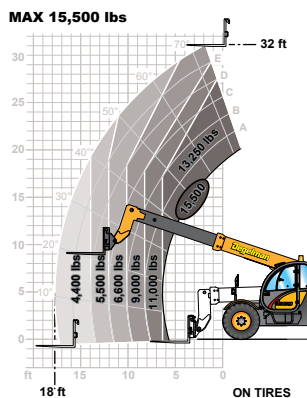
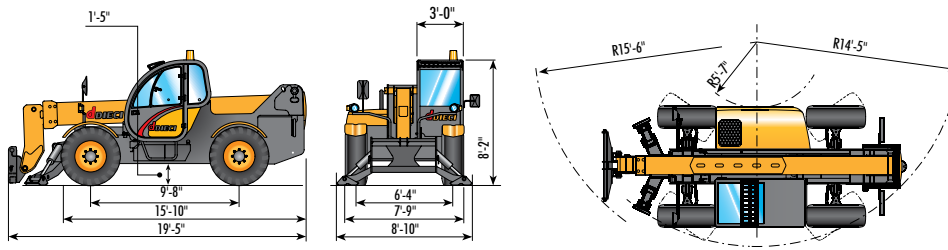
The Samson 70.10 features a 15,500 LB lift capacity with a single section boom and can lift and reach 32 feet out. The carriage is a heavier design than all other Dieci models and Degelman provides a line up of attachments that fit perfectly. The forks are also deeper and wider to accommodate the bigger loads.

Optional twin front axle-mounted stabilizers provide even greater lifting capacities and stability to a Samson 70.10.

Samson, like all Dieci telehandlers, uses ATP Anti Tipping Protection technology for safe worry-free operations. Do more in a day with the traction, manoeuvrability and heavy lifting capacity from the comfort of a modern spacious cab.



SAMSON 70.10



PERFORMANCE

Maximum lifting capacity.....	15,500 lbs
Maximum lifting height.....	32 ft
Maximum reach.....	18 ft
Fork angle.....	134 °
Towing force.....	16,410 lbf
Breakout Force.....	12,814 lbf
Maximum allowable slope.....	40 %
Total empty weight.....	24,860 lbs
Max speed.....	19 mph
(on request 25 mph with TA engine)	



TRANSMISSION

Transmission	Hydrostatic with variable capacity pump
Hydraulic engine.....	Automatic change
Gear reversing.....	Electro hydraulic
Inching pedal for controlled forward movement	
Servo controlled 2 speed gearbox	



HYDRAULIC CIRCUIT

Gear pump at full capacity.....	26 gal/min
Max working pressure.....	3,336 PSI
Proportional joystick controls.....	3 in 1 or 4 in 1



DIFFERENTIAL AXLES

Steering axles.....	2, with planetary reduction gears
Type of steering.....	4 wheels / crab / 2 wheels
Front axle.....	Rigid (levelling on request)
Rear axle.....	Oscillating



ENGINE

ENGINE	IVECO NEF F4GE0484C - TA - 128 hp (optional)
Maximum power.....	128 hp at 2,300 rpm
Operating principle.....	four-stroke engine diesel
Cylinders number and layout.....	4, vertical in line
Displacement	274 cu. in. - Aftercooler turbo compressor
Cooling system.....	liquid



TANK CAPACITY

Hydraulic circuit.....	42 gallons
Fuel tank.....	28 gallons



STANDARD DEVICES

CE certified, ANSI/ITSDF B56.6.205, CSA Standard B354.4-02	
Anti-tipping device with block for hazardous movements	
Hydraulic coupler for possible accessories on boom head	
Closed soundproof homologated cab ROPS - FOPS, with heating	
Front self-locking axle (limited slip 45%)	



TIRES

Standard (INDUSTRIAL LUG).....	445/65-22.5"
--------------------------------	--------------

Optional (INDUSTRIAL ROAD).....445/65 R 22.5"



HEAVY LIFT



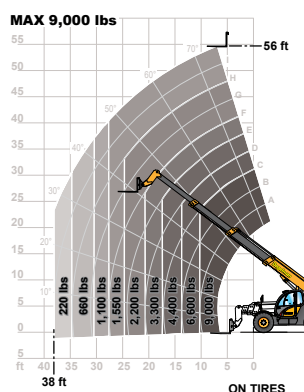
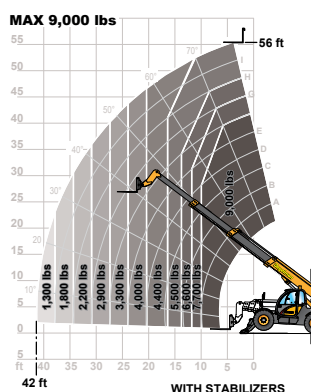
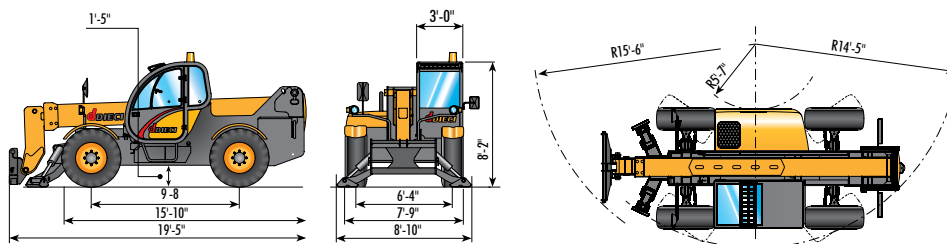
ICARUS 40.17

Icarus is all about height and reach. With a 9000 LB lift capacity and a lift height of 56 feet, these machines are versatile at any worksite. Man and material placement is fast, smooth and easy. Icarus telehandlers are used for normal multitasking jobs and are suited for work that requires extraordinary lift heights. Hydraulic self levelling lift action automatically keeps the load level as the three-section boom is raised and extended. Icarus safely works in harmony with a man basket or material basket nearly six stories in the air thanks to Dieci's ATP (Anti Tipping Protection).

Icarus is equipped with twin front axle-mounted stabilizers, sway control for rough terrain and a modern panoramic view cab. Visibility for tall projects is excellent with floor to ceiling heat resistant glass. Icarus has three steering modes with a four-wheel drive hydrostatic two speed transmission for rugged terrain. The four-in-one proportional joystick provides the operator with silky smooth safe movements.



ICARUS 40.17



PERFORMANCE

Maximum lifting capacity.....9,000 lbs
Maximum lifting height.....56 ft
Maximum reach.....42 ft
Fork angle.....134 °
Towing force.....16,410 lbf
Breakout Force.....12,814 lbf
Maximum allowable slope.....40 %
Total empty weight.....26,400 lbs
Max speed.....19 mph
(on request 25 mph with TA engine)



TRANSMISSION

Transmission Hydrostatic with variable capacity pump
Hydraulic engine.....Automatic change
Gear reversing.....Electro hydraulic
Inching pedal for controlled forward movement
Servo controlled 2 speed gearbox



HYDRAULIC CIRCUIT

Gear pump at full capacity.....26 gal/min
Max working pressure.....3,336 PSI
Proportional joystick controls.....3 in 1 or 4 in 1



DIFFERENTIAL AXLES

Steering axles.....2, with planetary reduction gears
Type of steering.....4 wheels / crab / 2 wheels
Front axle.....Rigid (levelling on request)
Rear axle.....Oscillating



ENGINE

ENGINE IVECO - TC - 102 hp
Maximum power.....102 hp at 2,300 rpm
Operating principle.....four-stroke engine diesel
Cylinders number and layout.....4, vertical in line
Displacement.....274 cu. in. - Turbo compressor
Cooling system.....liquid
ENGINE IVECO NEF F4GE0484C - TA - 128 hp (optional)
Maximum power.....128 hp at 2,300 rpm
Operating principle.....four-stroke engine diesel
Cylinders number and layout.....4, vertical in line
Displacement 274 cu. in. - Aftercooler turbo compressor
Cooling system.....liquid



TANK CAPACITY

Hydraulic circuit.....42 gallons
Fuel tank.....28 gallons



STANDARD DEVICES

CE certified, ANSI/ITSDF B56.6.205, CSA Standard B354.4-02
Anti-tipping device with block for hazardous movements
Hydraulic coupler for possible accessories on boom head
Closed soundproof homologated cab ROPS - FOPS, with heating
Front self-locking axle (limited slip 45%)
Stabilizers with independent hydraulic tilting



TIRES

Standard (INDUSTRIAL LUG).....405/70-24"

Optional (OVERSIZED).....18-22.5"

HIGH REACH



RADIO REMOTE CONTROL

Productivity at your fingertips

The optional but highly recommended Radio Remote Control System allows an operator to control boom functions using a compact, wireless remote control pendant from outside the cab or from within a personnel work area.

The remote can raise, lower, extend, rotate and retract the boom as well as start and control the R.P.M. or stop the engine.

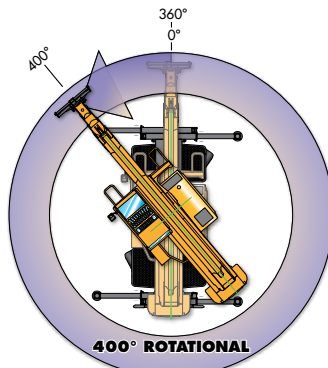
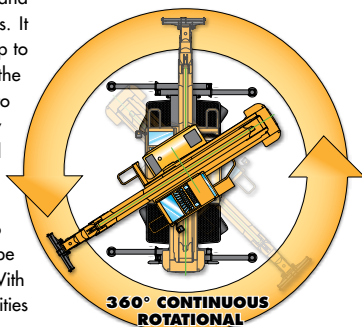
Contractors can do more in a day with less people. The remote operator can manoeuvre materials to different elevations all from the elevated work area or where there is better visibility and slowly and precisely place the loads. The transmitter is water and impact resistant. Controls are proportional for smooth and safe delivery.

The ATP (Anti Tipping Protection) remains employed giving you safe operation of the machine. The Radio remote control option can be added to both Dieci Fixed-Arm and Rotational body telehandlers.



ROTATIONAL BODY MACHINES

Consider all the features and benefits of a rotating Pegasus. It can rotate 360° continuously or up to 400° without having to relocate to the load pick site. Expect time saving to be cut in half. Imagine the ability to drive down narrow rows and tight quarters, rotate the boom 90° to deliver materials on the spot. The low mounted boom also means that the telehandler can be used with a light material bucket. With the right attachment the possibilities are endless.



Pegasus machines start with a patented rotating control spindle combined with unparalleled lift heights, capacities, and a wide range of attachments. Rotational units are fitted with an advanced ATP (Anti

position of the outriggers. Calculations are performed seamlessly so the operator can see at a glance the load and lifting position. The Pegasus works as a full function rotating telehandler, an access platform and a crane. This internally-developed moment indicator is programmed to manage the load charts of different attachments. ATP analyzes the position of the load in three dimensions while simultaneously monitoring the work configuration of the machine. The programmed loads are compared against data sent using pressure transducers and limit switches. When the telehandler reaches an overloaded position, the system locks out any non-compliant movement automatically and a visual and audible alarm will go off.

Whether your business is highway, mining, construction, steel erection, crane rental, demolition, plant maintenance, quarry or civil work, roadwork, industrial handling or the waste industry, the Pegasus saves time and money.



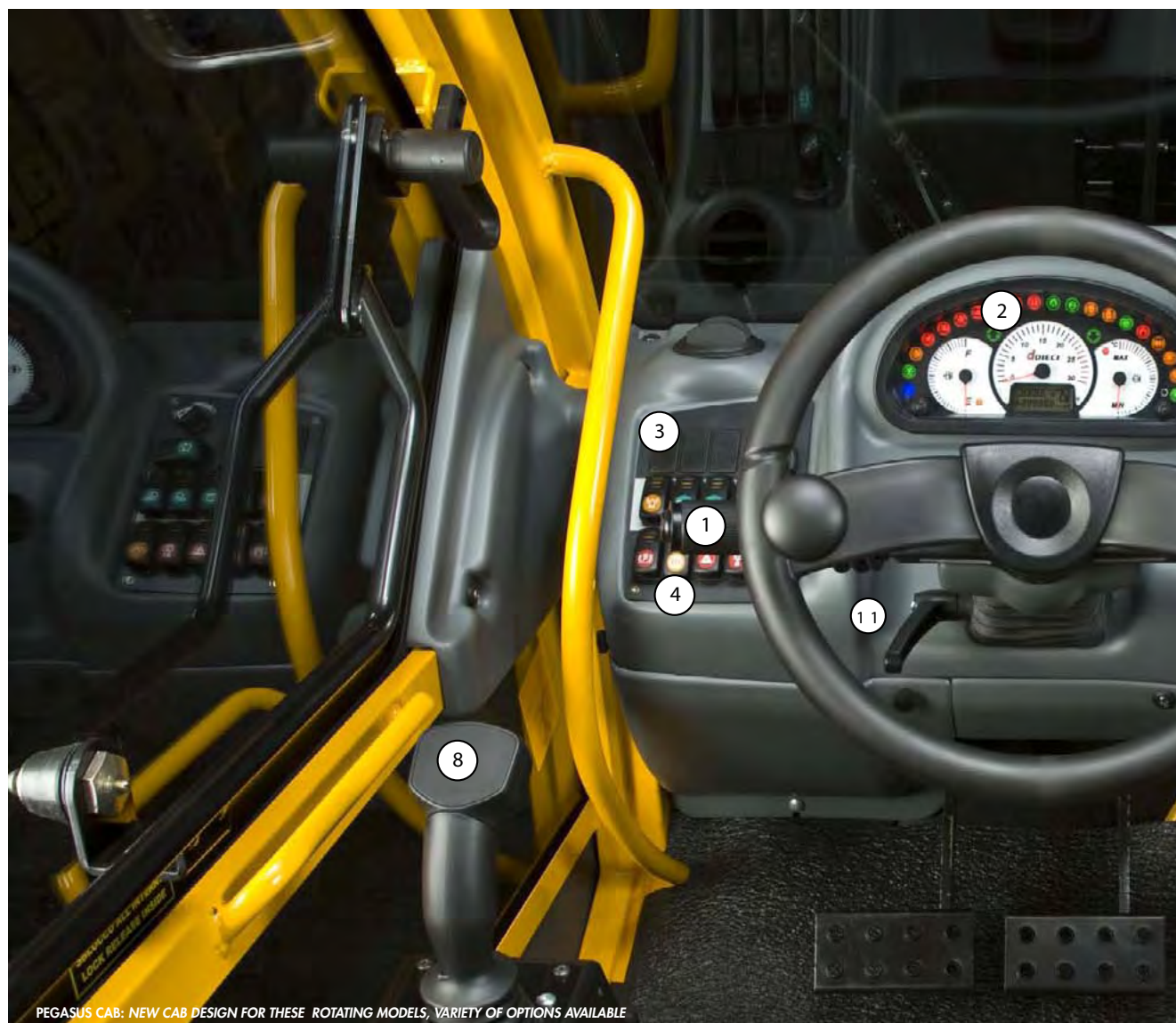
Tipping Protection) system. ATP tells operators when they are approaching maximum capacity lift height, boom angle, forward reach, degree of rotation, weight of load lifted and the

It is the wide variety of attachments that make Dieci's rotating telescopic Pegasus so desirable. When using forks, material is lifted and placed fast when not perfectly squared up as the Pegasus can rotate to safely land the load. Utilizing a variety of jibs and winches provides the contractor with the ability to set trusses, I-beams, panels or glass, without having to rent a crane. This can be a huge time and cost savings. What the rotating telescopic handler lacks in capacity, compared to most cranes, it makes up for in rough terrain mobile capability. Get closer to the site and eliminate the need for a greater capacity.



PEGASUS FEATURES





PEGASUS CAB: NEW CAB DESIGN FOR THESE ROTATING MODELS, VARIETY OF OPTIONS AVAILABLE





The view is spectacular. You can see your worksite. You can see your work tool. And you can see what you are doing. The spacious cab is largely made of floor to ceiling heat-resistant glass and contained in a safe ROPS and FOPS approved curvacious frame. After all, an unobstructed view is crucial for operators landing loads 40 feet or more in the air. Given the amount of time these machines spend in transit on crowded jobsites, the importance of all-around visibility cannot be overstressed. Dieci visibility is superb due to the high-mount cab, narrow profile, minimal obstructed design, low-mount boom, side-mounted engine, sloping engine hood and a patented unique lift cylinder.

- 1 Forward / Reverse Lever
- 2 Dash (Fuel Gauge/Engine Tachometer w/Hour Meter/ Temperature Gauge)
- 3 Assortment of Controls
- 4 Hi/Low Range Selector Switch (2-speed drive)
- 5 Anti-tipping Computer
- 6 Transverse (SWAY) Levelling Switch
- 7 Anti-tipping Over-Ride Button
- 8 Proportional Joystick Control
- 9 Stabilizer raise/lower switch bank and joysick
- 10 Fully Adjustable Deluxe Seat (Air-Ride Optional)
- 11 Tilt Steering Column

ROTATION CAB



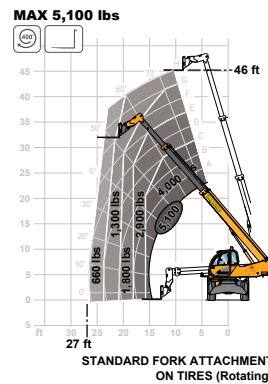
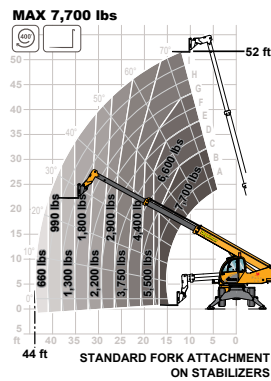
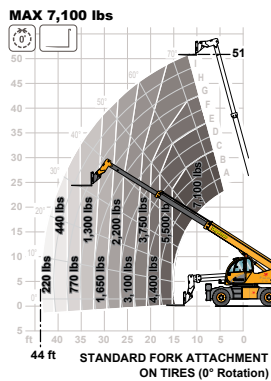
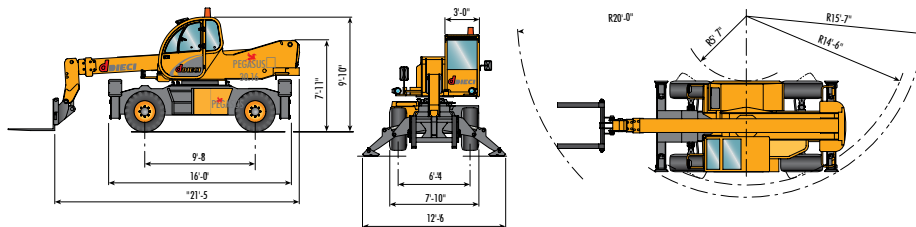
PEGASUS 35.16 - 400 DEGREE ROTATIONAL

The rotating telescopic Pegasus is truly a unique product and can be a fast return on the investment. An economic, entry level Rotational Body Telehandler with all the features of a Continuous Rotational Body machine, except the price. This machine features a powerful Iveco 102 hp Turbo-charged Diesel engine. Its 2-speed hydrostatic, 25mph road speed gets it around to various locations quickly. The ATP (Anti Tipping Protection) safety feature along with stabilizers

all around ensures both operator comfort and safety. The Pegasus 35.16 features a lifting capacity of 7,750 lbs with a 52 foot reach making it ideal for most construction and building applications. Add air conditioning and these machines are a delight to operate.



PEGASUS 35.16



PERFORMANCE

Maximum lifting capacity.....7,750 lbs
Maximum lifting height.....52 ft
Maximum reach.....44 ft
Fork angle.....134 °
Towing force.....16,410 lbf
Breakout Force.....12,814 lbf
Maximum allowable slope.....40 %
Total empty weight.....28,820 lbs
Max speed.....19 mph



TRANSMISSION

Transmission Hydrostatic with variable capacity pump
Hydraulic engine
Automatic change Gear reversing
Electro hydraulic Inching pedal for controlled forward movement
Servo controlled 2 speed gearbox



HYDRAULIC CIRCUIT

Gear pump at full capacity.....26 gal/min
Max working pressure.....3,336 PSI
Proportional joystick controls with double joystick 5 in 1



DIFFERENTIAL AXLES

Steering axles.....2, with planetary reduction gears
Type of steering.....4 wheels / crab / 2 wheels
Front axle.....Self blocking
Rear axle.....Oscillating (can be blocked)



ENGINE

ENGINE IVECO TC - 102 hp
Maximum power.....102 hp at 2,300 rpm
Operating principle.....four-stroke engine diesel
Cylinders number and layout.....4, vertical in line
Displacement.....274 cu. in. - Turbo compressor
Cooling system.....liquid



TANK CAPACITY

Hydraulic circuit.....65 gallons
Fuel tank.....33 gallons



STANDARD DEVICES

CE certified, ANSI/ITSDF B56.6.205, CSA Standard B354.4-02
Hydraulic movements with proportional control distributor
Anti-tipping device with block for hazardous movements
Turret rotation 400°
Oscillation block on rear axle
Hydraulic coupler for possible accessories on boom head
Closed soundproof FOPS approved driver's cab, with heating, stabilizers



TIRES

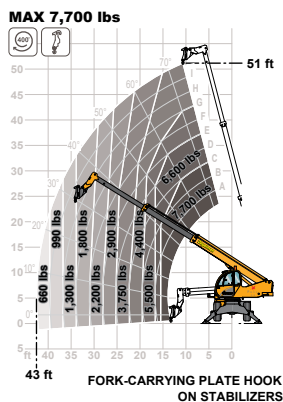
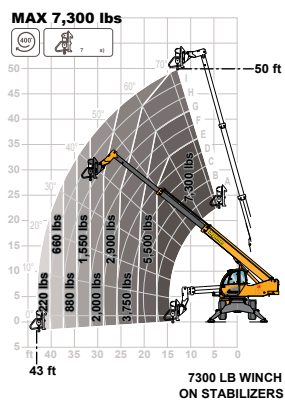
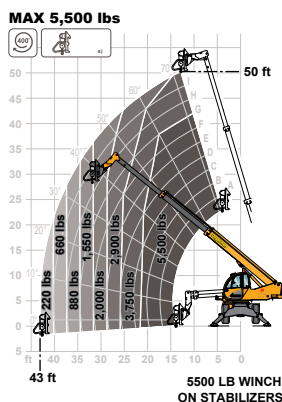
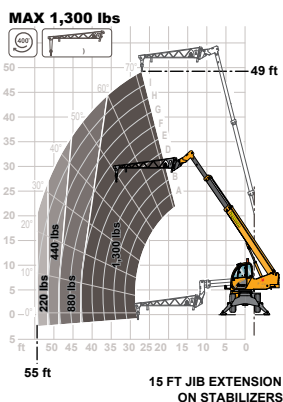
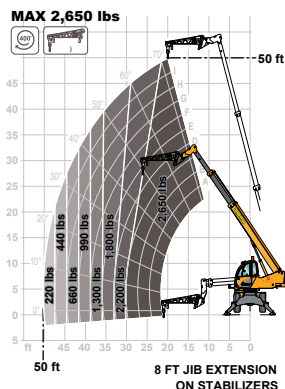
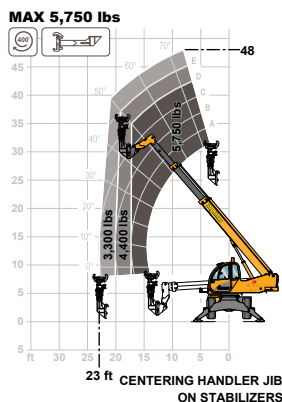
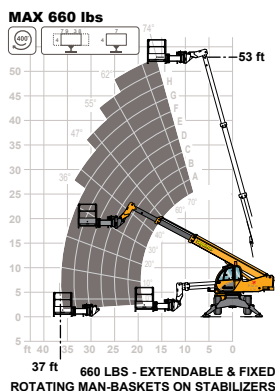
Standard (INDUSTRIAL LUG).....16/70/20"



ECONOMIC ROTATIONAL



PEGASUS 35.16



PEGASUS 35.16



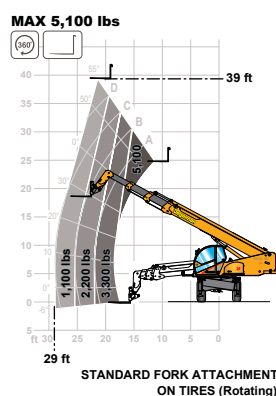
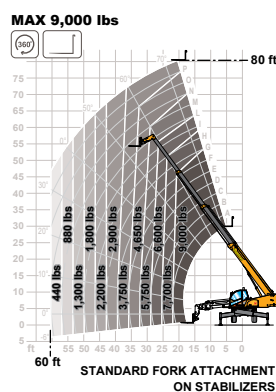
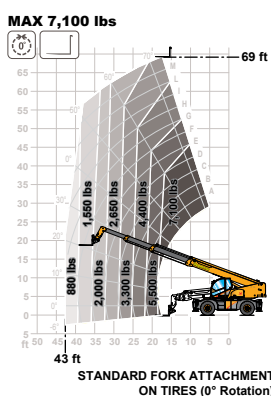
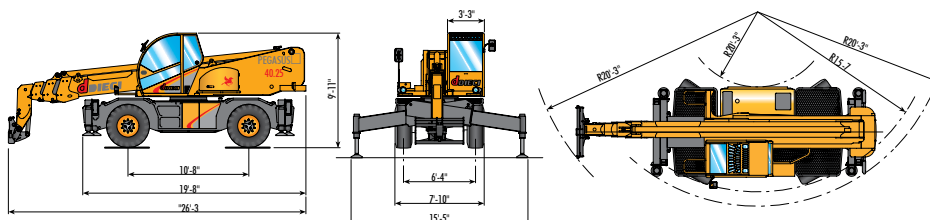
PEGASUS 40.25 - 360 DEGREE - CONTINUOUS ROTATION

If high reach is your concern, the Pegasus 40.25 is the unit for you. Featuring 9,000 lbs of lift capacity and a very impressive reach of 81 feet, the Pegasus 40.25 is excellent at any worksite that requires man and material placement at extreme heights. The newly designed machine features a powerful Perkins 144 hp Turbo After-Cooled Diesel engine. Hydraulic self levelling lift action automatically keeps the load level as the 3-section boom is raised

and extended, perfect for machines equipped with work platforms (man baskets) or material baskets. Operators remain comfortable all day with air conditioning and double proportional joysticks.



PEGASUS 40.25



PERFORMANCE

Maximum lifting capacity.....9,000 lbs
Maximum lifting height.....81 ft
Maximum reach.....61 ft
Fork angle.....120°
Towing force.....21,131 lbf
Breakout Force.....12,814 lbf
Maximum allowable slope.....40 %
Total empty weight.....38,060 lbs
Max speed.....25 mph



TRANSMISSION

Transmission Hydrostatic with variable capacity pump
Hydraulic engine.....Automatic change
Gear reversing.....Electro hydraulic
Inching pedal for controlled forward movement
Servo controlled 2 speed gearbox



HYDRAULIC CIRCUIT

Double gear pump with "Energy Saving" system capacity at speed.....36 gal/min
Max working pressure.....3,336 PSI
Proportional joystick controls with double joystick 5 in 1
Simultaneous movements.....5
Proportional control distributor "Load Sensing" with "Flow Sharing"



DIFFERENTIAL AXLES

Steering axles.....2, with planetary reduction gears
Type of steering.....4 wheels / crab / 2 wheels
Front axle.....Levelling
Rear axle.....Oscillating



ENGINE

ENGINE PERKINS ETA- 144 hp
Maximum power.....144 hp at 2,200 rpm
Operating principle four-stroke engine diesel, Common Rail
Cylinders number and layout.....4, vertical in line
Displacement 268 cu. in. - Turbo compressor aftercooler
Cooling system.....liquid
Electronic accelerator
Manual accelerator
Air pre-heater for cold climates



TANK CAPACITY

Hydraulic circuit.....71 gallons
Fuel tank.....48 gallons



STANDARD DEVICES

CE certified, ANSI/ITSDF B56.6.205, CSA Standard B354.4-02
Anti-tipping device with block for hazardous movements
Continuous turret rotation over 360°
Oscillation block on rear axle
Hydraulic coupler for possible accessories on boom head
ROPS-FOPS approved closed soundproof cab with heating and opening roof
Stabilizers with joystick control
Grammer deluxe seat
High efficiency cyclone air filter
Self-blocking rear axle (LIMITED SLIP)



TIRES

Standard (OVERSIZED).....445/65-22.5"

Optional (INDUSTRIAL ROAD).....445/65 R 22.5"

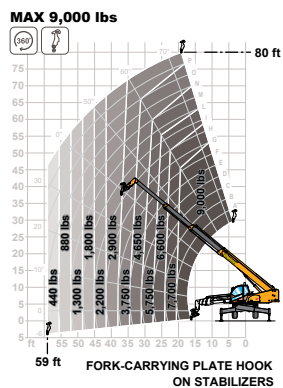
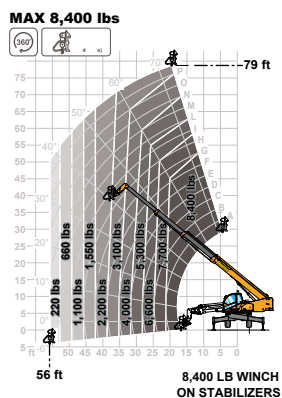
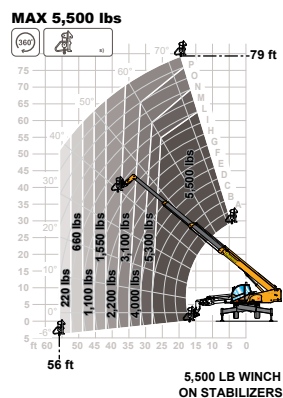
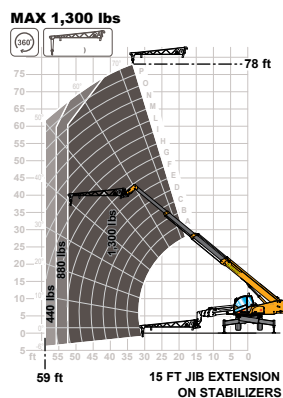
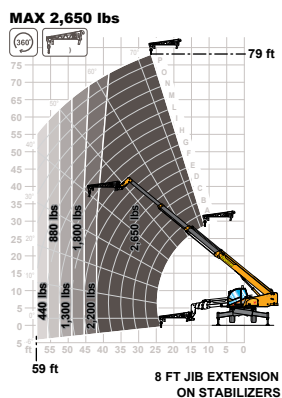
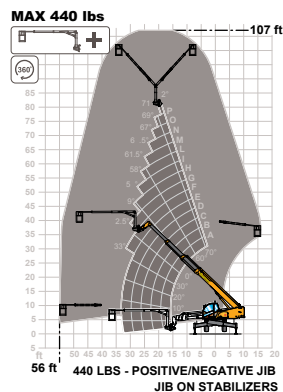
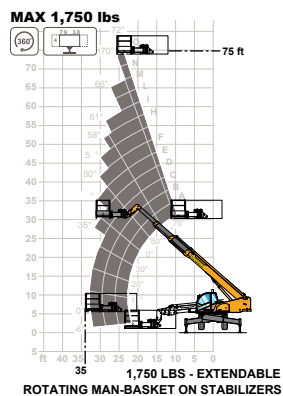
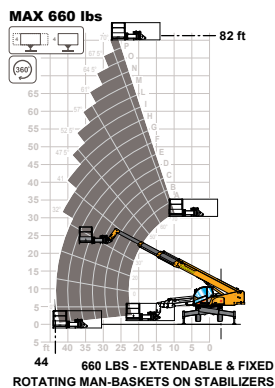


HIGHEST ROTATIONAL



SYMBOLS KEY	 Negative jib	 Extendable three-sided basket	 (x.x m) Jib (Measurements)	 Centering handler jib	 360° Continuous rotation	 0° Front position	 Stabilizers raised	 Forks
	 Positive jib	 A Three-sided fixed basket	 (x.x ton) Winch (Capacity)	 Fork-carrying plate hook	 400° Non-continuous rotation	 Do not work on tires	 Stabilizers lowered	 Do not maneuver if the machine is not levelled

PEGASUS 40.25



PEGASUS 40.25



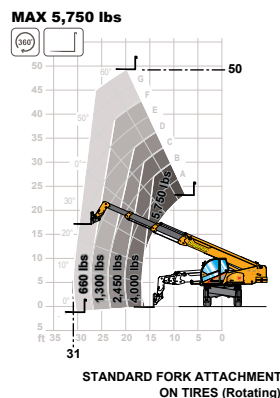
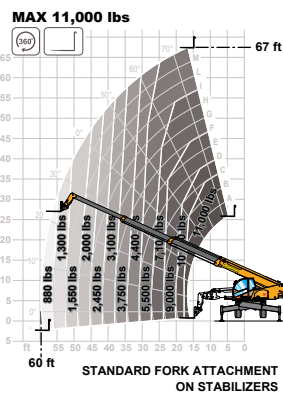
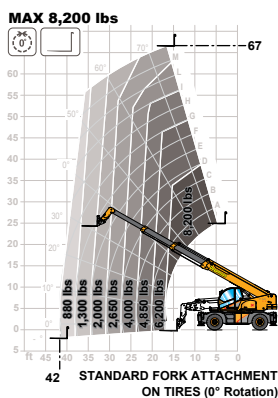
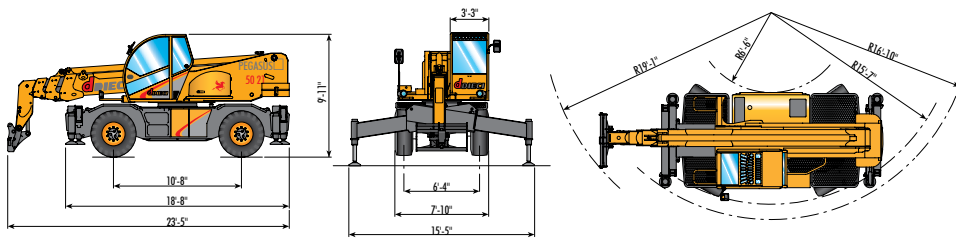
PEGASUS 50.21 - 360 DEGREE – CONTINUOUS ROTATION

This is the best machine for a combination of lifting capacity and reach. Featuring a lift capacity of 11,000 lbs and a smooth reach of 67 feet with a 3-section boom, this machine really performs at any jobsite. Equipped with twin front axle-mounted stabilizers, transverse (sway) levelling, an anti-tipping computer and panoramic view cab, productivity will increase as operators

will feel safe and comfortable during those long work days. Features such as three steering modes, four-wheel drive and double proportional joystick control offer smooth, reliable performance for rugged conditions.



PEGASUS 50.21



PERFORMANCE

Maximum lifting capacity.....11,000 lbs
Maximum lifting height.....67 ft
Maximum reach.....60 ft
Fork angle.....134 °
Towing force.....21,131 lbf
Breakout Force.....12,814 lbf
Maximum allowable slope.....40 %
Total empty weight.....37,840 lbs
Max speed.....25 mph



TRANSMISSION

Transmission.....Hydrostatic with variable capacity pump
Hydraulic engine
Automatic change
Gear reversing
Electro hydraulic
Inching pedal for controlled forward movement
Servo controlled 2 speed gearbox



HYDRAULIC CIRCUIT

Double gear pump with "Energy Saving" system capacity at speed.....36 gal/min
Max working pressure.....3,336 PSI
Proportional joystick controls with double joystick 5 in 1
Simultaneous movements.....5
Proportional control distributor "Load Sensing" with "Flow Sharing"



DIFFERENTIAL AXLES

Steering axles.....2, with planetary reduction gears
Type of steering.....4 wheels / crab / 2 wheels
Front axle.....Levelling
Rear axle.....Oscillating



ENGINE

ENGINE PERKINS 1104D-ETA- 144 hp
Maximum power.....144 hp at 2,200 rpm
Operating principle four-stroke engine diesel, Common Rail
Cylinders number and layout.....4, vertical in line
Displacement 268 cu. in. - Turbo Aftercooled compressor
Cooling system.....liquid
Electronic accelerator
Manual accelerator
Air pre-heater for cold climates



TANK CAPACITY

Hydraulic circuit.....71 gallons
Fuel tank.....48 gallons



STANDARD DEVICES

CE certified, ANSI/ITSDF B56.6.205, CSA Standard B354.4-02
Anti-tipping device with block for hazardous movements
Continuous turret rotation over 360°
Oscillation block on rear axle
Hydraulic coupler for possible accessories on boom head
ROPS-FOPS approved closed soundproof cab/heating/opening roof
Stabilizers with joystick control
Grammer deluxe seat
High efficiency cyclone air filter
Self-blocking rear axle (LIMITED SUP)



TIRES


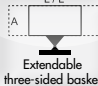
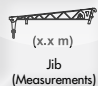






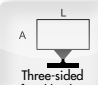
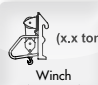





Standard (OVERSIZED).....445/65-22.5"

Optional (INDUSTRIAL ROAD)....445/65 R 22.5"

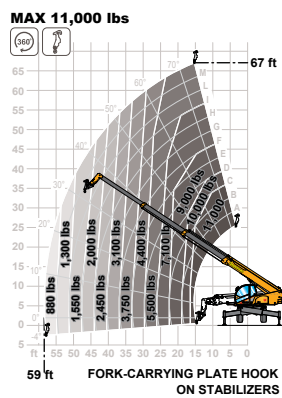
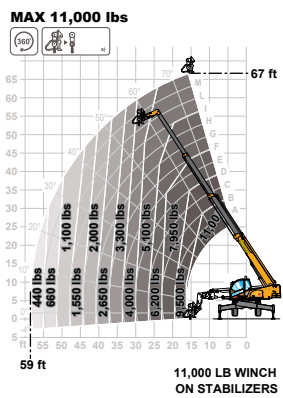
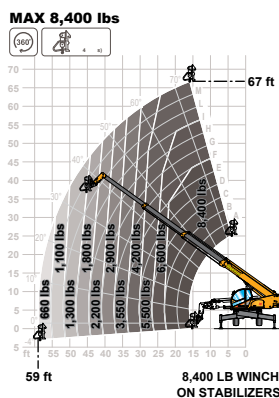
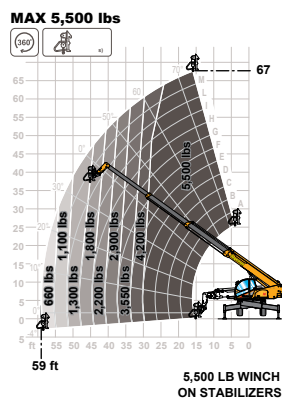
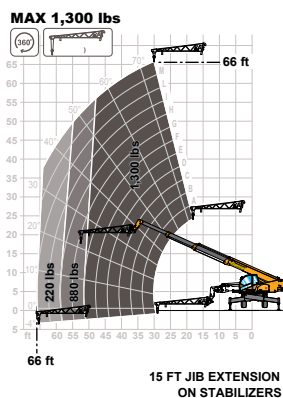
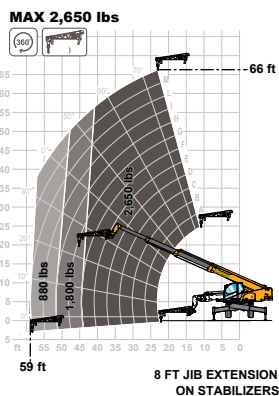
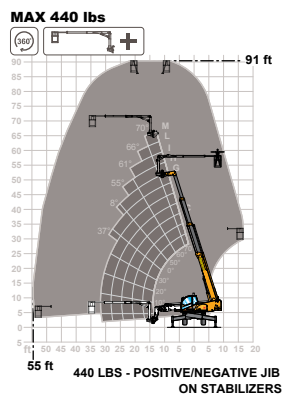
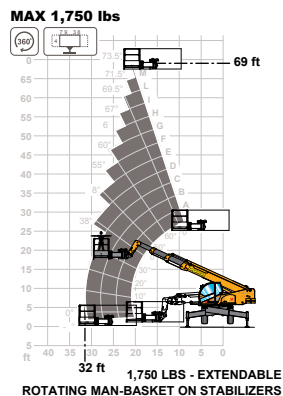
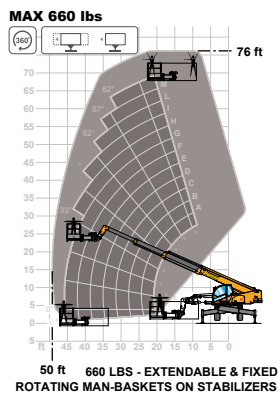


ALL PURPOSE ROTATIONAL



SYMBOLS KEY								
								

PEGASUS 50.21



PEGASUS 50.21



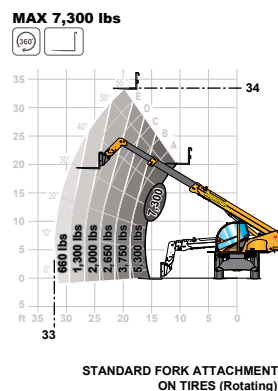
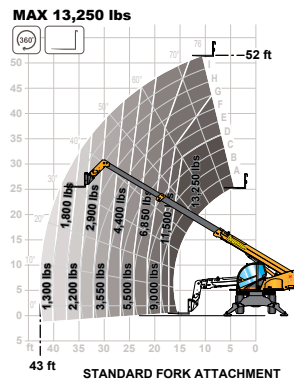
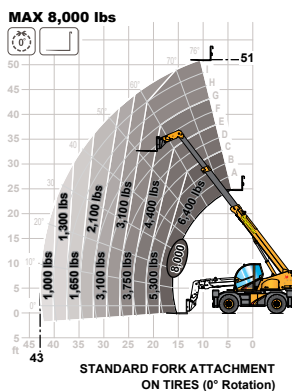
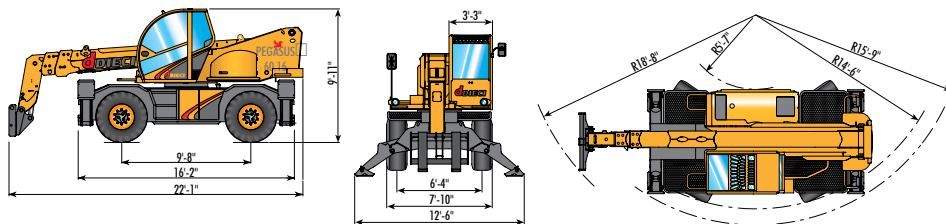
PEGASUS 60.16 - 360 DEGREE – CONTINUOUS ROTATION

The Continuous Rotation Machine that lifts the heaviest loads. This powerful work-horse is equipped with a powerful 144 hp Perkins Turbo After-cooled diesel engine providing awesome performance for any application. The Pegasus 60.16 Features a lifting capacity of 13,200 pounds and a reach of 52 feet. It's

powerful 2 section self-levelling boom delivers strength like no other Rotational Body Telehandler. This is the perfect machine is for heavy masonry platforms. When power and strength is a must the PEGASUS 60.16 can deliver.



PEGASUS 60.16



PERFORMANCE

Maximum lifting capacity.....13,200 lbs
Maximum lifting height.....52 ft
Maximum reach.....43 ft
Fork angle.....134 °
Towing force.....20,232 lbf
Breakout Force.....12,814 lbf
Maximum allowable slope.....40 %
Total empty weight.....36,520 lbs
Max speed.....25 mph



TRANSMISSION

Transmission Hydrostatic with variable capacity pump
Hydraulic engine.....Automatic change
Gear reversing.....Electro hydraulic
Inching pedal for controlled forward movement
Servo controlled 2 speed gearbox



HYDRAULIC CIRCUIT

Double gear pump with "Energy Saving" system capacity
at speed.....36 gal/min
Max working pressure.....3,336 PSI
Proportional joystick controls with double joystick 5 in 1
Simultaneous movements.....5
Proportional control distributor "Load Sensing" with "Flow Sharing"



DIFFERENTIAL AXLES

Steering axles.....2, with planetary reduction gears
Type of steering.....4 wheels / crab / 2 wheels
Front axle.....Levelling
Rear axle.....Oscillating



ENGINE

ENGINE PERKINS 1104D-ETA- 144 hp
Maximum power.....144 hp at 2,200 rpm

Operating principle four-stroke engine diesel, Common Rail
Cylinders number and layout.....4, vertical in line
Displacement 268 cu. in. - Turbo compressor aftercooler
Cooling system.....liquid
Electronic accelerator
Manual accelerator
Air pre-heater for cold climates



TANK CAPACITY

Hydraulic circuit.....71 gallons
Fuel tank.....48 gallons



STANDARD DEVICES

CE certified, ANSI/ITSDF B56.6.205, CSA Standard B354.4-02
Anti-tipping device with block for hazardous movements
Continuous turret rotation over 360°
Oscillation block on rear axle
Hydraulic coupler for possible accessories on boom head
ROPS-FOPS approved closed soundproof cab/heating/opening roof
Stabilizers with joystick control
Grammer deluxe seat
High efficiency cyclone air filter
Self-blocking rear axle (LIMITED SUP)



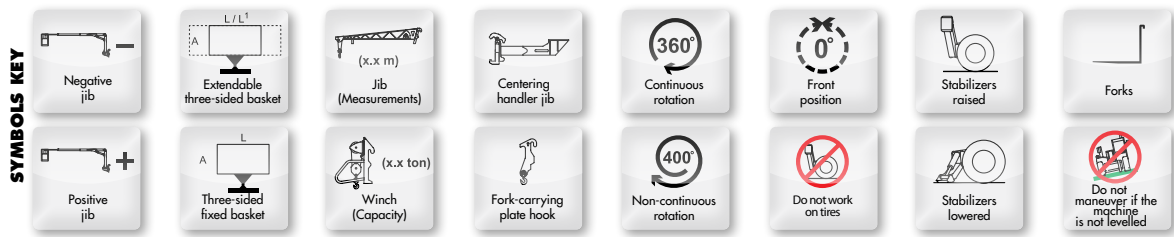
TIRES

Standard (OVERSIZED).....445/65-22.5"

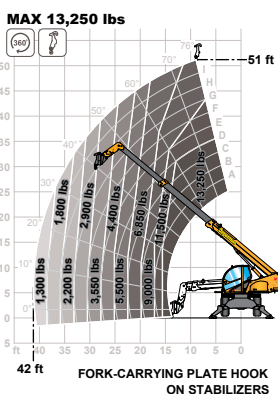
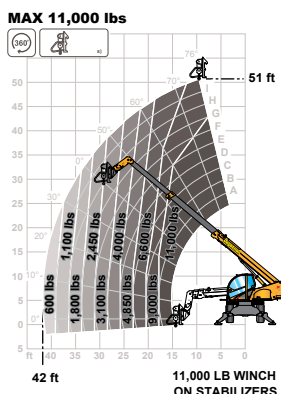
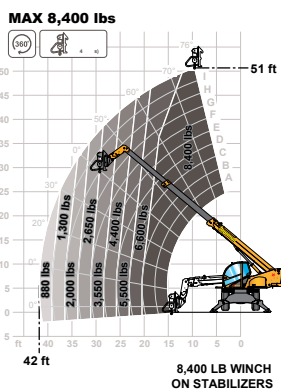
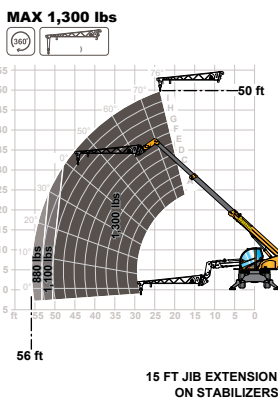
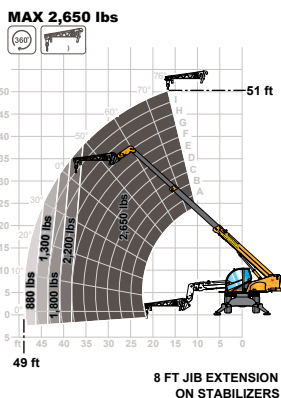
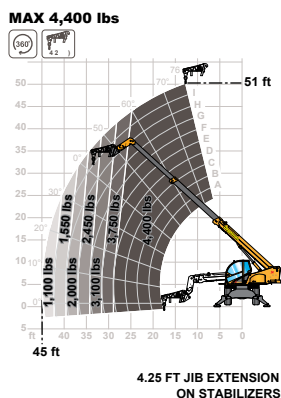
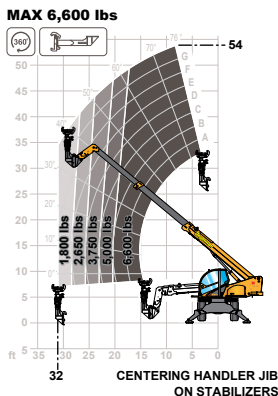
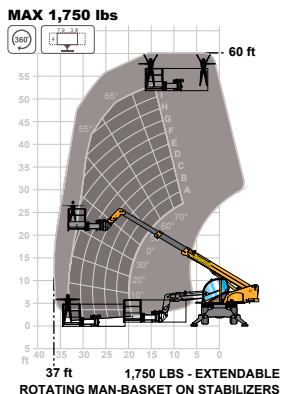
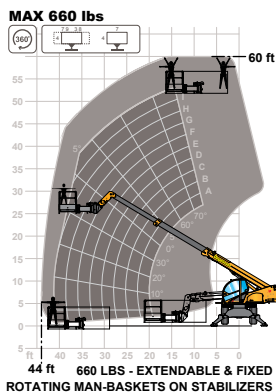
Optional (INDUSTRIAL ROAD).....445/65 R 22.5"



HEAVY LIFT ROTATIONAL



PEGASUS 60.16



PEGASUS 60.16

ENDLESS ATTACHMENTS

Change the attachment to change the machine. Manual tasks traditionally done by many people are now carried out by Dieci rough terrain telescopic handlers. One skilled operator with one machine can do a multitude of activities more efficiently and quickly. With the ability to easily change attachments.

The machine can be a high reach front-end loader one minute and a crane or forklift the next, lifting pallets of bricks eight stories high. Degelman designs, develops and manufactures attachments for Dieci telehandlers from buckets and blades to grapples and forks.



FORKS & RELATED ATTACHMENTS

Dieci pallet forks are a hook-on style featuring a standard 48 inch pallet fork length. Fork extensions can be added increasing fork length to 76 inches. For better stability an extra wide 72 inch fork carriage allow wide loads to be safely handled. Bale Spears are made from an extremely

high tensile material. A small profile design allows for good visibility. Moving, lifting, stacking bales is extremely easy when using a manoeuvrable Dieci telehandler. Bale Grabbers are perfect for use in heavy baled silage.



SQUARE BALE FORK

Lift square bales stacked two high.



HYDRAULIC FORK POSITIONING

Designed for moving wide loads such as plywood and gypsum panels in construction and other industries. Hydraulic Fork Positioning is made so that you can hydraulically slide the forks side to side up to 8" without getting out of the cab.



FORK GUARD

This is designed as a height extension to accompany our Fork Carriage. If you find you're lifting taller loads, using this extension lets you lift them more securely, with more support for higher stacked loads so they don't fall back.



FORK WITH TWO SWIVEL TEETH (BALE FORK)

If you're moving a lot of bales, this attachment will do it for you. Lightweight design coupled with durable strength.



ROUND BALE FORK

If you're moving a lot of bales, this attachment will do it for you. Lightweight design coupled with durable strength.

FORK EXTENSIONS

Ideal for lifting hard to reach loads such as flatbed trucks. Increases the length of standard forks up to 76 inches.



FORK CARRIAGE

Floating forks are attached to the end of the boom head providing either a 46 inches or 51 inch wide stance (depending on the machine). By adding the optional fork carriage and hydraulic quick attachment the operator will never have to get out of the cab to hook up. A 72 inch wide Fork Carriage is also available for better load stability.

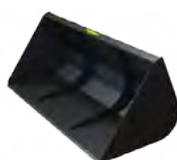
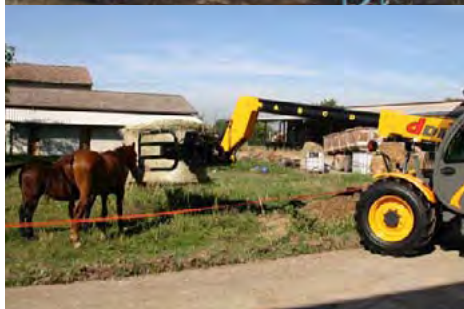
FORKS & SPEARS



BUCKETS, GRAPPLES & BLADES

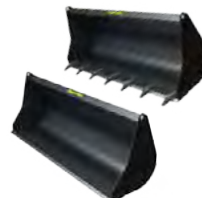
Although compact in size, Dieci delivers a very impressive breakout force when fitted with a bucket and easily competes with the best skid steers on the market. As the largest industrial dozer blade manufacturer in the world, Degelman has a vast array of material handling solutions of different sizes, capacities and widths including: four-way dozer blades, tripping blades (ICEBREAKER), containment

blades (STRONGBOX), light weight multi-winged blades (SPEEDBLADE) as well as an array of buckets and grapples. All are custom designed to fit onto Dieci carriages.



LIGHT MATERIAL BUCKET

The material buckets are available in a variety of sizes all designed to fit Dieci Telehandlers.



EXCAVATING BUCKETS (TEETH OPTIONAL)

Perfect for dirt and snow removal for any industry. And because it's on one of our Dieci Telehandlers, you can do more and reach higher.



GRAPPLE BUCKET

The Grapple Bucket is designed for moving silage and manure. We also discovered it works really well for picking up and moving bales. Perfect for farms and loading manure feedlots. Available in 7 feet or 8 feet.



CLAMSHELL BALE HANDLER

Strong, secure and effective as the day is long, this attachment is perfect for large feedlots. The extended vertical sides of the Clamshell Bale Handler means you can move even more bales or silage, faster.



BALE HANDLER

Excellent for producers who move wrapped or silage baled. Strong and easy to use, our Bale Handler moves silage and stacks large bales securely.



SPEEDBLADE

Move volumes of snow quickly and easily. Hydraulically open the blade to its maximum width for large or small snow drifts or fold the wings in to move and contain high volumes of snow. Highly maneuverable—get in and out of tight spaces easily. Available in 15 foot and maximum 18 foot widths.



STRONGBOX BOX BLADE AND STRONGBOX ADAPTER PLATE

This box blade is a simple, strong and effective tool for high volume snow removal. Double-skin construction, reinforced high volume side plates, reversible skid shoes, and a durable high density rubber cutting edge.



UNIVERSAL SKID STEER ADAPTER BRACKET

Take advantage of your skid steer attachments by converting to Dieci mount with this universal skid steer adapter.

BUCKETS & GRAPPLES



JIBS, TRUSS BOOMS, HOOKS & WINCHES

Jibs can be outfitted with winches capable of lifting up to five tons.

The Truss Boom provides an extra reach from 4'4", 8'2" to 14'10" to lift and place items such as building roof trusses. Hooks compliment the machine on any jobsite. Winches allow for more accurate placement of loads. Loads can be placed below ground or over obstacles. All attachments including

winches, truss booms and hooks integrate with the Dieci ATP (Anti Tipping Protection) for safe worry-free operation.



WINCH

Able to winch heavy loads and lift them where you need them. Just take the forks off and put the hook on. It's easy to change and easy to use. Available with or without cable guide. In 2.5 ton, 3.8 ton and 5 ton sizes integrated with the ATP system for added safety.



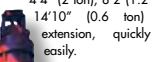
JIB WITH HOOK

If you need a longer extension to move material through windows or openings on construction sites, this 3'6" Jib with hook will do just the job. Just take the forks off and put this attachment on and you're good to go.



TRUSS BOOM WITH HOOK 4'4", 8'2" & 14'10" LENGTHS

If you need an extension to move material into openings onsite, then this is the attachment to get. Similar to our jibs, just take the forks off and attach the 4'4" (2 ton), 8'2" (1.2 ton) or 14'10" (0.6 ton) crane extension, quickly and easily.



LOG GRAPPLE

Made to move a lot of logs at once and lift them high. Depending on the diameter of the logs being moved, the Log Grapple attachment can make short work of any job.



LOG HANDLING CLAMP

Made for the logging industry, the Log Handling Clamp is one of the strongest, most reliable log handling attachments you'll find.



HOOK

An old standard on a versatile machine. Maneuver and carry large loads up high. Just take the forks off and put the hook on. It's easy to change over and easy to use.



GIRAFFE NECK JIB WITH HOOK

This attachment allows you to move large flat material, such as sheetrock, safely and easily. Its arm reaches out far enough so any flat material has a reduced chance of touching the main stay and being damaged.



TRUSS BOOM WITH WINCH 4'4", 8'2" & 14'10" LENGTHS

Have the ability to reach and extend with the added benefit of a winch. Designed to give more versatility to anyone in the construction industry. It's strong, durable and reliable. Available in 4'4" (2 ton), 8'2" (1.2 ton) or 14'10" (0.6 ton).



ORANGE PEEL GRAB WITH 5 TEETH

Typically used for clamping and lifting debris.



DRUM GRIP

For the construction and oil & gas industries, this attachment gives you the ability to lift heavy drums up to sites or to stack them wherever you wish with confidence. Strong and with a tough grip that doesn't let go.



JIBS BOOMS HOOKS



PEOPLE MOVING & MANEUVERING

Man Baskets provide the operator to move a combination of persons and material in the air simultaneously saving valuable time and money. They can be extended hydraulically and feature a 180 degree swivel. As a safety precaution the Dieci dump command is disabled as the man basket is connected. Man baskets can be attached to any Fixed-Arm or Rotational Body Dieci Telehandler. Fixed-Arm units must be ordered with the proper man basket set-up

from the factory. Pegasus units with man basket setups come factory standard.

Even more impressive is the positive/negative aerial jib and rotating basket. The positive/negative jib is incredible for bridge inspection. Move below grade reach to 35 feet and reach nearly 14 feet under and behind the unit's center line of rotation. All controlled from the basket. Additionally another 40 feet of reach can be obtained with the positive position.



MAN BASKET

41" deep, 82" long, 43" high and controlled from the basket, passengers can lift themselves straight up to where they need to go. Audible warning when lowered.



180° ROTATING MAN BASKET

Achieve three-way versatility with this attachment. Our 180° Rotating Man Basket means you can lift up, and rotate laterally left and right. And it's all managed by the personnel in the basket using fingertip hydraulic control. Audible warning when lowered.



MATERIAL BASKET

Made to meet the needs of the construction industry, our Material Basket allows you to take up the tools and materials you need to get the job done. Various sizes available upon request.



EXTENDIBLE MAN BASKET

Ideal for construction crews. The right and left sides of the Extendible Man Basket hydraulically extend three feet. So, depending on what job you're doing, personnel can control the lift from the basket and extend the sides whenever they want. Audible warning when lowered. Available in both regular and 180° rotating models.



POSITIVE/NEGATIVE JIB WITH MAN BASKET

Designed for passengers to lift themselves up and move from side to side. The attachment hooks up to the front of the machine and the passengers operate the jib themselves from the man basket.



MAN BASKETS



CUSTOMER SATISFACTION

We believe that offering a high quality product is only part of the equation and that the secret to success is an unwavering commitment to service. Our customers are the driving force behind everything that we do, from providing outstanding follow-up

support and service, to building a reliable dealer network and maintaining a dependable selection of parts and accessories. We understand the value of customer trust, and we strive to earn and maintain that trust with each and every customer.

"I bought two Pegasus 35 16 Rotating machines for the James Bay River Rupper Tunnel. They made a wonderful job and are able to work in arctic conditions."
- Denis Pelletier
Master Manager
Simard-Beaudry Inc, QC

"I am only beginning to imagine the uses for my new Dieci. I have driven my input costs down significantly tackling our chores."
- Gary Lake
Mobiusolutions, SK

"Our APOLLO 25 6 is two or more machines in one, which makes it a time saver and helps speed up production. Very versatile and easy to maneuver in tight situations."
- Ryan Fitzsimmons
Pristine Park Models
Regina, SK

"This is a great machine! With loads of safety features, and the ability to perform very sensitive maneuvers (such as hoisting glass into frames)."
- Joey Briscoe
Ottawa Valley Glass
Assistant Project Manager of the Winnipeg Airport

"After working with our Pegasus for two years, we are very happy with the performance, reliability and capacity in very cold conditions."
- Ivon Gagnon
GTS Canada Inc
Labrador, NFLD

"We are more than pleased with the machine (Pegasus 40 25) and its performance, as well as parts are readily available."
- Steve Carpenter
Moreau Industries
Fort McMurray, AB

"We are most impressed with its ability to push snow (Apollo 25 6)."
- Trevor Nielson
ICI Artificial Lift Inc
Lloydminster, AB

"Our Pegasus is an excellent machine and versatile for a multi family construction company. Some days it's a forklift others, it is a crane or manlift."
- Joel Formosa
Muchalat Construction
Vancouver Island, BC

"I tried five different makes of telehandlers before deciding on the Dieci (Samson 45 8). The Dieci was stronger and shorter than the others. Precision and visibility lend themselves to the operational safety of the Dieci."
- Jaques De Carufell
GLR Inc
Quebec

"I pulled out a 102,000lb dump with Triden Pup out of a sink hole. Very impressed."
- Chad Willox
Spur Construction
Calgary, AB

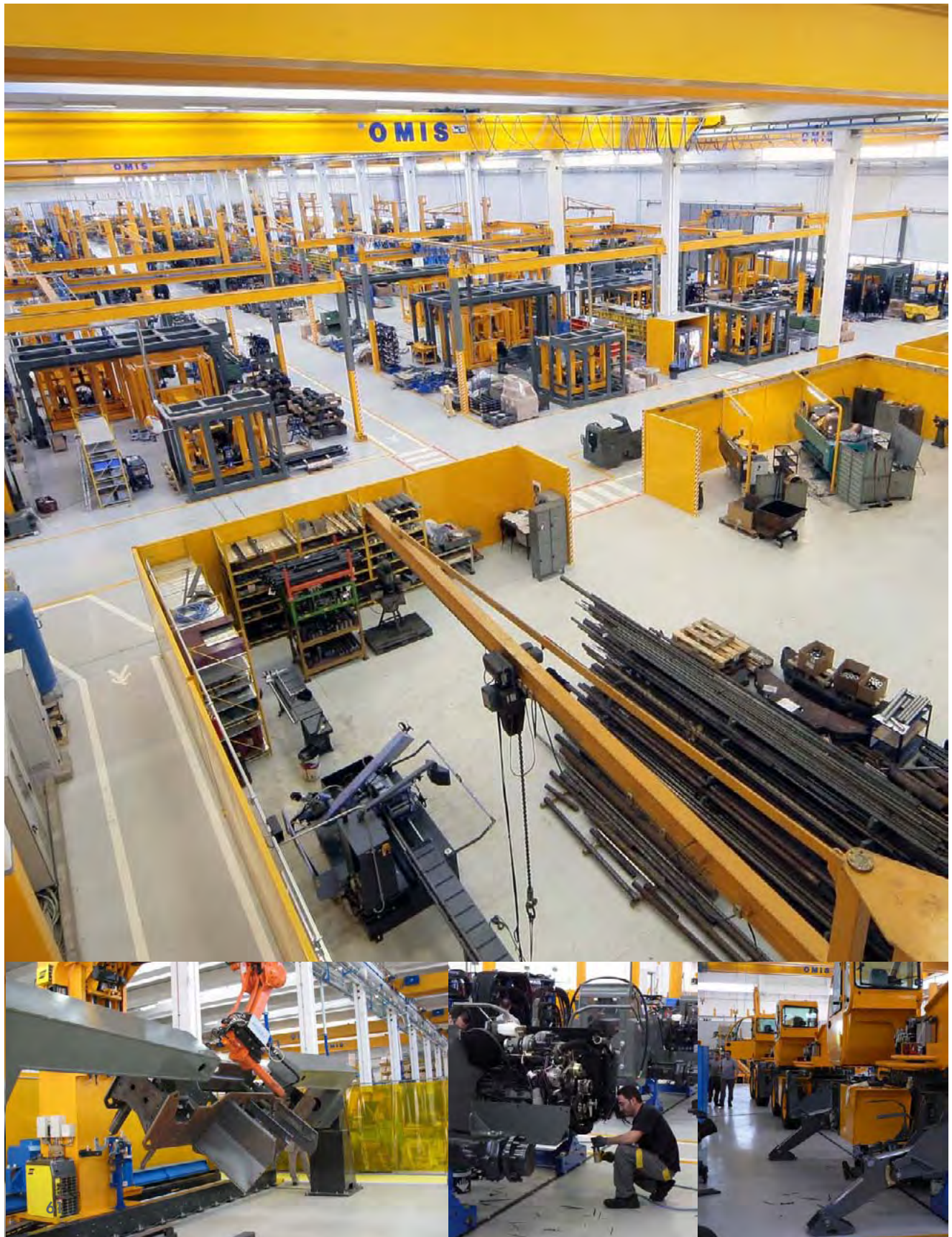
"The Degelman-Dieci Telehandlers have been a great addition to our rental fleet. They have proven to be a reliable machine that holds up well to the daily rigors that a rental unit sees. Ease of use, comfort, and the strong performance of the machines have been appreciated by our customers. Whether it's extreme heat or wickedly cold, our rental units have stood up to the elements and allowed our customers to get their jobs done efficiently."
- Ken Barlott
Rental Manager
Flaman Rentals

"We work a pipeline site at Fort Mc Murray, Alberta. Our Dieci Pegasus 40 25 is able to perform in upwards of minus fifty degrees Celsius. We recommend this machine due to its reliability, precision, stability and safe operation."
- Jean-Francois Moreau
Moreau Industriel Inc
Quebec

"Bought a SAMSON 70 10 to handle big and heavy weight. We appreciate the overload system that is simple and safe."
- Serge Picard
Composites VCI Inc
Montreal, QC



TESTIMONIALS



WORLD CLASS MANUFACTURING



Dieci of Montecchio Emilia Italy have been manufacturing telehandlers since 1983. In response to the growing demand for Dieci telehandlers, this company invested over \$60 million in a new ultra-modern, one million square foot state of the art factory - 350,000 square feet of which is under one roof.

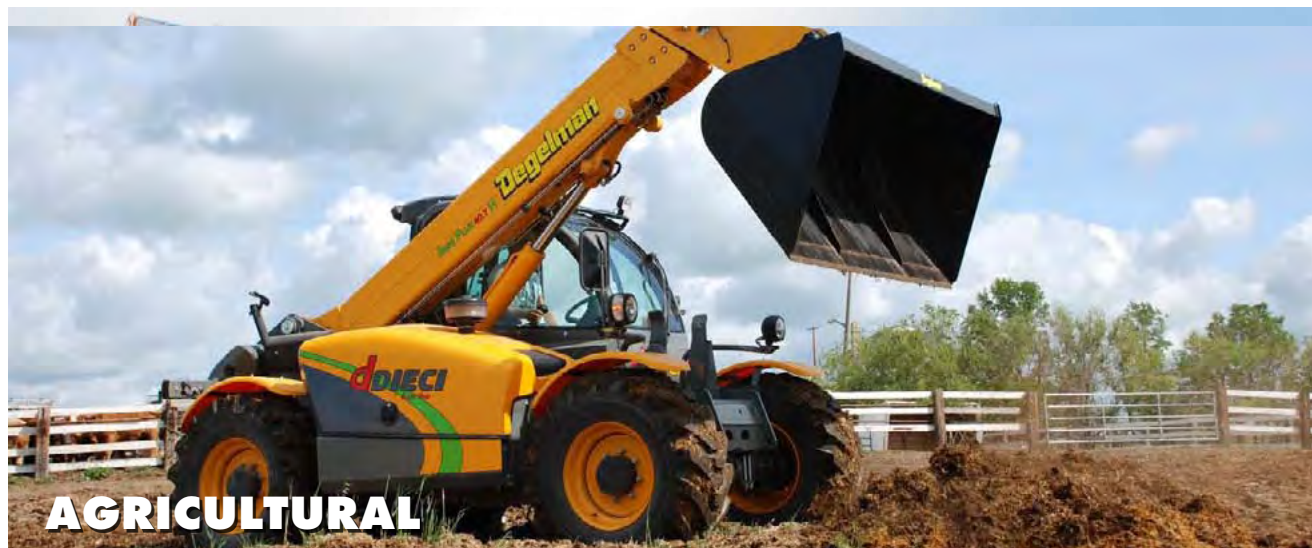
The factory is truly an advanced architectural and engineering masterpiece: six production lines, electronic testing, micro-shot peening, automated internal warehouses, robotic

welders and sound proof test booths. Within the office walls, Dieci has meticulous training for in-house personnel and technical training courses for international distributors.

Dieci's advanced Research and Development Centre is constantly engaged in studying the best new solutions available in terms of lift, capacity, reach, power, control, traction, aesthetics and ergonomics. Dieci manufactures over 100 telehandler models on 30 different chassis from super compact machines for confined spaces to 360° rotational vehicles with 56 foot lifts designed to replace the work yard cranes. New Dieci designs will continue to be a perfect blend of design and performance. No wonder Dieci is one the largest telehandler manufacturer in the world. There is a perfect machine and attachment for every application.



STATE OF THE ART



www.degelman.com
1 800 667 3545 306 543 4447

Degelman Industries Ltd. and Dieci S.r.l. are constantly striving to improve their products and reserves the right to change design, material and specifications without notice. Images shown may not be exact representations.
Printed in Canada ♦